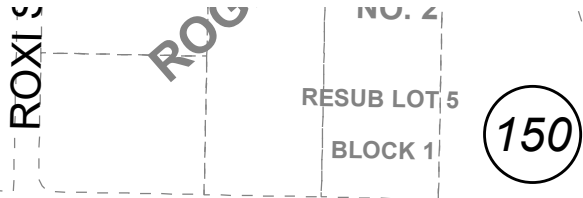


055-081

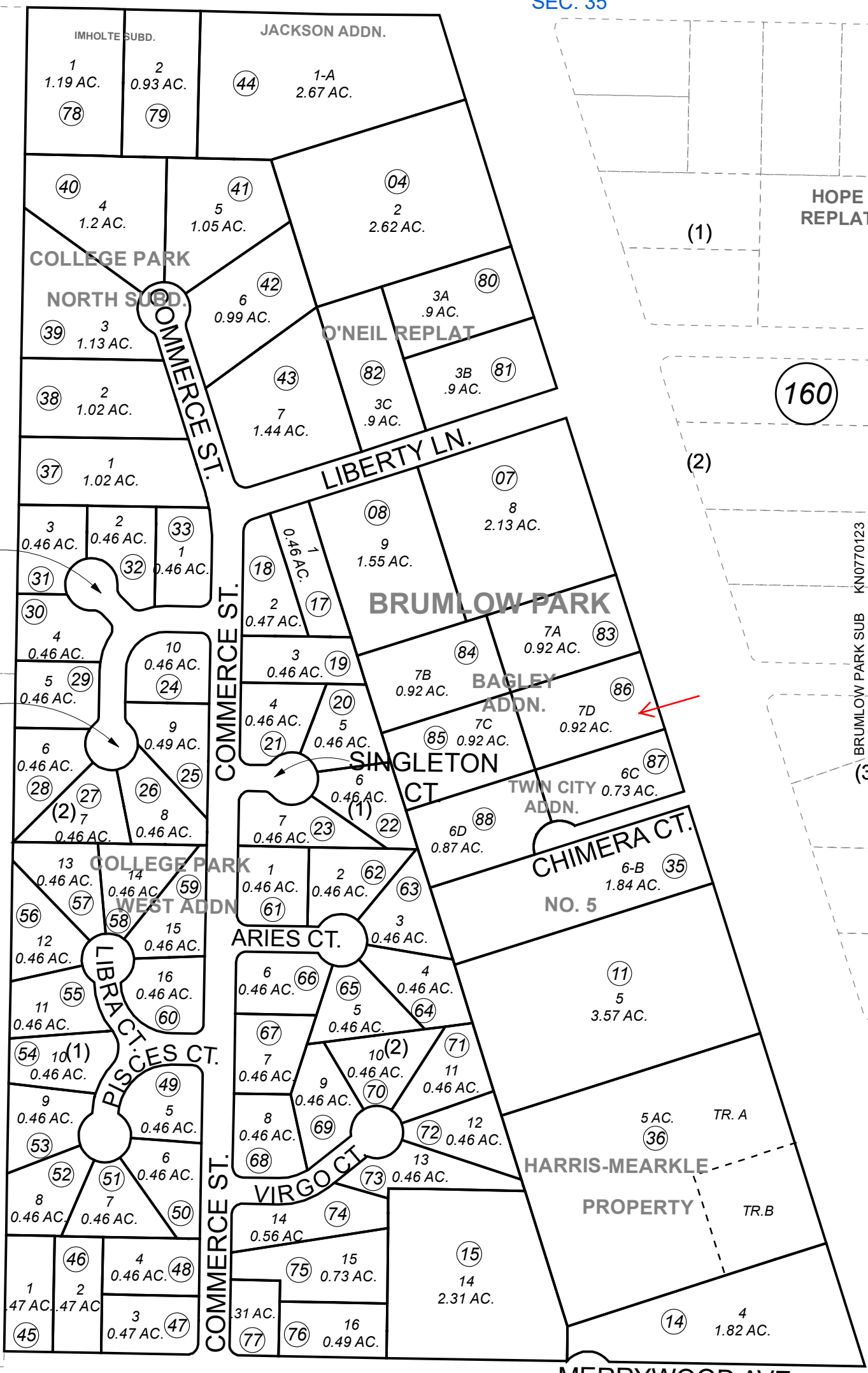
POR. NE 1/4 SEC. 35, T05N, R11W, S.M.



This map is prepared for Kenai Peninsula Borough Assessing Dept. use only and is not intended for conveyance nor is it a survey.

W. POPPY LN.

SEC. 26
SEC. 35



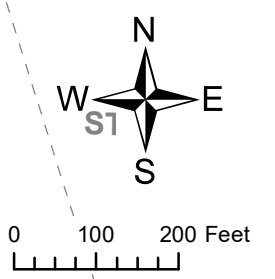
IS CT.
W PL.
073

- (1) HOPE REPLAT
- (2)
- (3)
 - BRUMLow PARK SUB KN0770123
 - BRUMLow PARK SUB LOT 5 KN0780139
 - HARRIS MEARKLE PROPERTIES SUB REPLAT KN0790013
 - BRUMLow PARK SUB ADDN NO. 1 KN0830123
 - BRUMLow PARK SUB COLLEGE PARK WEST ADDN KN0830222
 - BRUMLow PARK SUB NO 5 KN0840011
 - COLLEGE PARK NORTH SUB KN0940001
 - BRUMLow PARK SUB JACKSON ADDN KN0950019
 - ASHTON PARK SUB KN0970074
 - IMHOLTE SUB KN0970095
 - BRUMLow PARK SUB O'NEIL REPLAT KN2007053
 - BRUMLow SUB BAGLEY ADDN KN2015014
 - BRUMLow PARK SUB TWIN CITY ADDN KN2018091

Note- Assessor's block Numbers Shown in Ellipses
Assessor's Parcel Numbers Shown in Circles

Assessor's Map
Kenai Peninsula Borough

170
NO. 6



MERRYWOOD AVE.

ASHTON PARK SUBD.

430
ADDN. NO. 1

KALIFONSKY
COMMERCIAL

JANUARY 7, 2019

For 2019 assessment roll	
Delete	Revise
34	87,88