

VICINITY MAP

OWNERSHIP AFFIDAVIT

WE HEREBY CERTIFY THAT WE ARE THE OWNERS OF THE PROPERTY SHOWN AND DESCRIBED HEREON. WE HEREBY REQUEST APPROVAL OF THIS PLAT, SHOWING SUCH EASEMENTS FOR PUBLIC UTILITIES, ROADWAYS AND ALLEYS DEMAND BY US FOR PUBLIC USE.

Alexander M. Ross
ALEXANDER M. ROSS
NO. STAR ROUTE

Freda J. Ross
FREDA J. ROSS
KENAI, ALASKA

NOTARY'S ACKNOWLEDGMENT

SUBSCRIBED AND SWORN BEFORE ME THIS 16th DAY OF March, 1970

Donald S. Bent
NOTARY FOR ALASKA

July 1, 1970
MY COMMISSION EXPIRES

PLAT APPROVAL

PLAT APPROVED BY THE BOROUGH PLANNING COMMISSION THIS 16th DAY OF February, 1970

George A. Johnson
AUTHORIZED OFFICIAL

ENGINEER'S CERTIFICATE

I, THE UNDERSIGNED REGISTERED ENGINEER OR SURVEYOR, HEREBY CERTIFY THAT A LAND SURVEY HAS BEEN COMPLETED BY ME OR UNDER MY DIRECT SUPERVISION AND THAT CORNERS AND MONUMENTS HAVE BEEN LOCATED AND ESTABLISHED AND THAT THE DIMENSIONS SHOWN HEREON ARE TRUE AND CORRECT.

12 March, 1970
C. A. Skelton
ENGINEER OR SURVEYOR

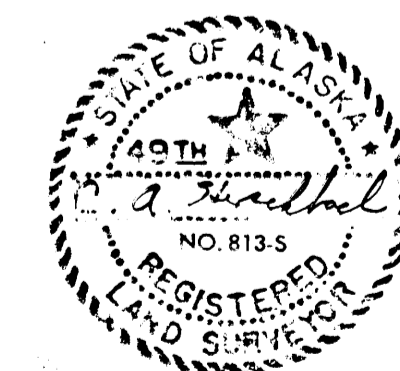
KENAI CITY PLANNING COMMISSION

RECEIVED: _____
APPROVED: _____
BY _____ BY _____
CHAIRMAN SECRETARY

KENAI CITY COUNCIL

THIS IS TO CERTIFY THAT THE WITHIN PLAT WAS DULY SUBMITTED TO AND APPROVED BY THE COUNCIL OF THE CITY OF KENAI, ALASKA, BY RESOLUTION NUMBER _____ DULY AUTHENTICATED AS PASSED THIS _____ DAY OF _____, 1970

CITY CLERK MAYOR



CONTAINS 62.37 ACRES MORE OR LESS

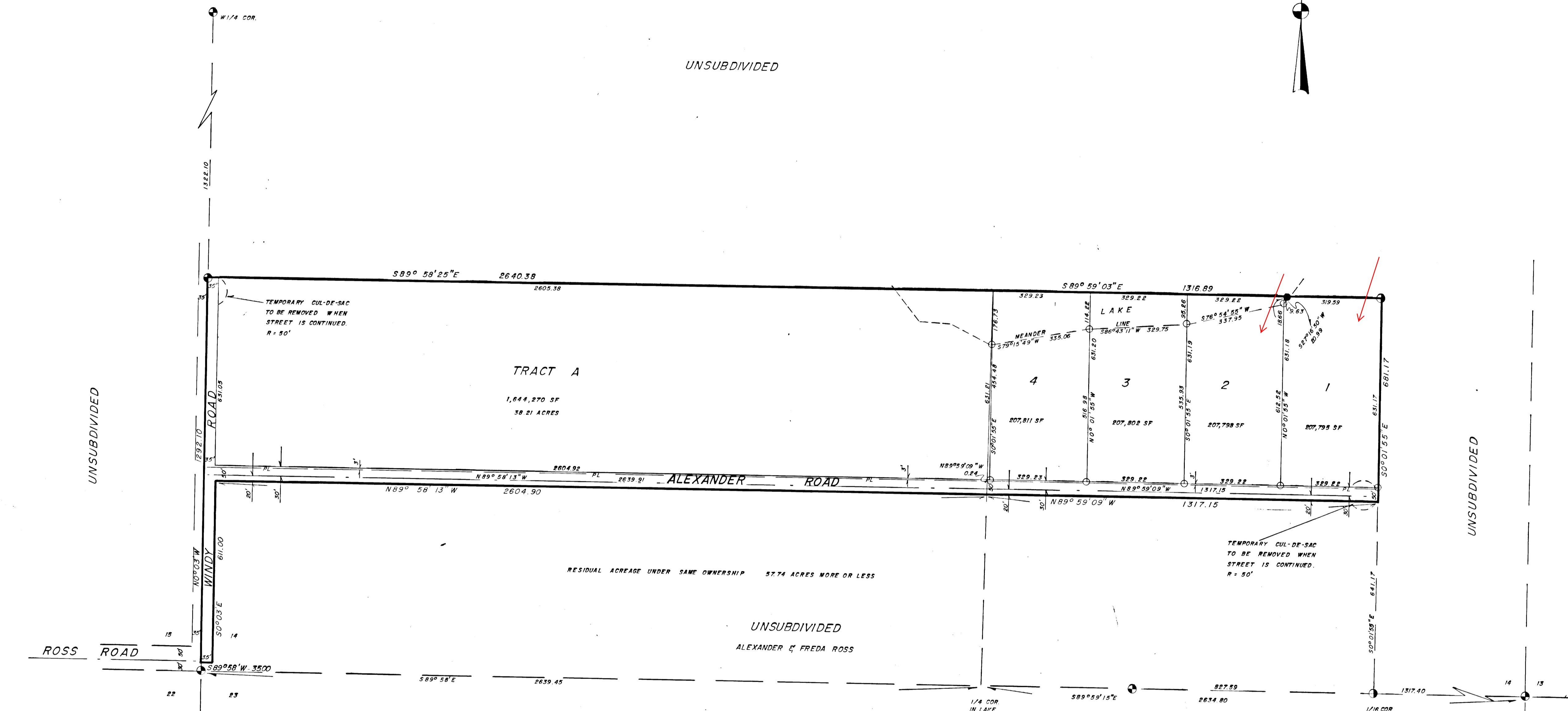
ROSS SUBDIVISION

LOCATED IN
S 1/2 SEC. 14, T7N R12W, 5M.

HEWITT V. LOUNSBURY & ASSOCIATES
ENGINEERS - SURVEYORS
ANCHORAGE, ALASKA

DATE: JANUARY 23, 1970 SCALE: 1" = 200'
DRWN: A.L.T. SHEET: 1 OF 1
CHKD: W.E.F. GRID:

RECORDED - FILED
Kenai REC. DIST.
DATE: 3-18 1970
TIME: 2:38 P.M.
BY: _____
W.E.F.



- LEGEND
- BRASS CAP MONUMENT EXISTING
 - REBAR SET
 - ⊙ BRASS CAP MONUMENT SET
 - IRON PIPE SET
 - R- POWER LINE

K-1680