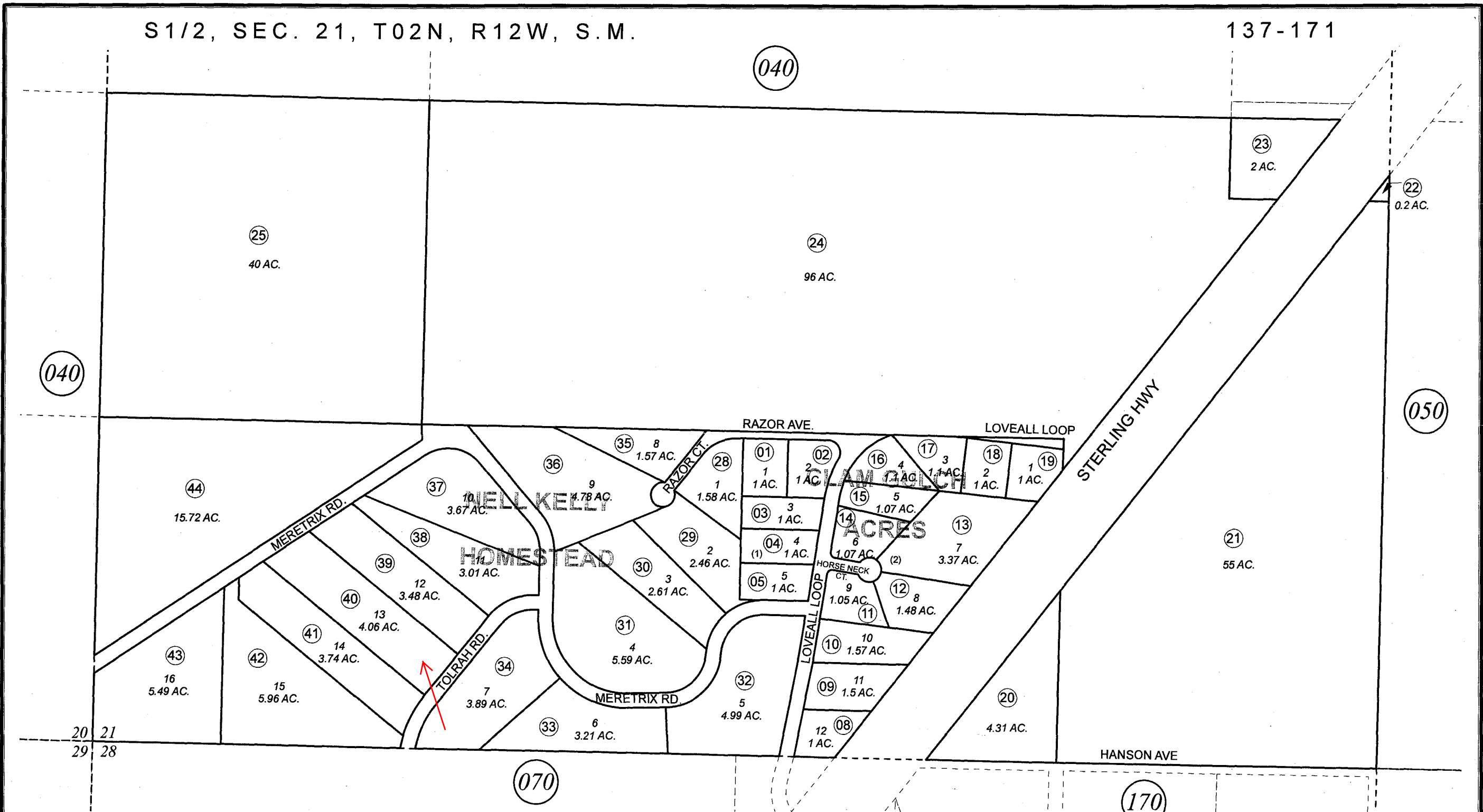


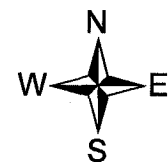
S 1/2, SEC. 21, T02N, R12W, S.M.

137-171



JULY 1, 2008

For 2009 assessment roll		
Delete	Add	Revise
	To	
16	17-22	



Assessor's Map
Kenai Peninsula Borough

RYDEN SUB PART 1 KN0990091
RYDEN SUB PART 2 KN2008056

This map is prepared for Kenai Peninsula Borough Assessing Dept. use only and is not intended for conveyance nor is it a survey.
Note- Assessor's block Numbers Shown in Elipses
Assessor's Parcel Numbers Shown in Circles