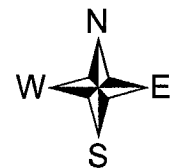
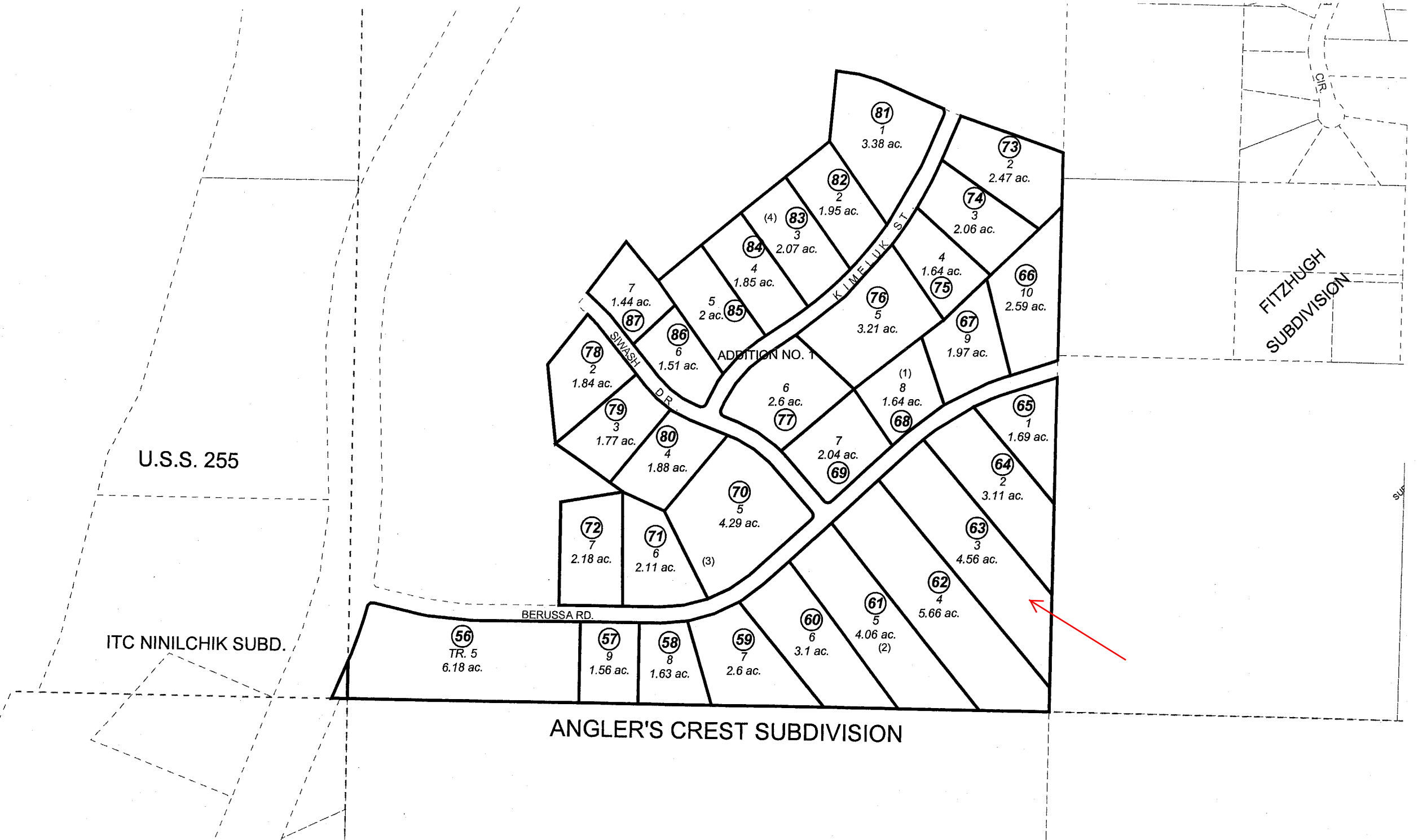


ANGLER'S CREST SUBD. DETAIL

159-010



DECEMBER 17, 2001

For 2002 assessment roll		
Delete	Add	Revise
To		
NEW PAGE		

Assessor's Map
Kenai Peninsula Borough

This map is prepared for Kenai Peninsula Borough Assessing Dept. use only and is not intended for conveyance nor is it a survey.

Note- Assessor's block Numbers Shown in Ellipses
Assessor's Parcel Numbers Shown in Circles