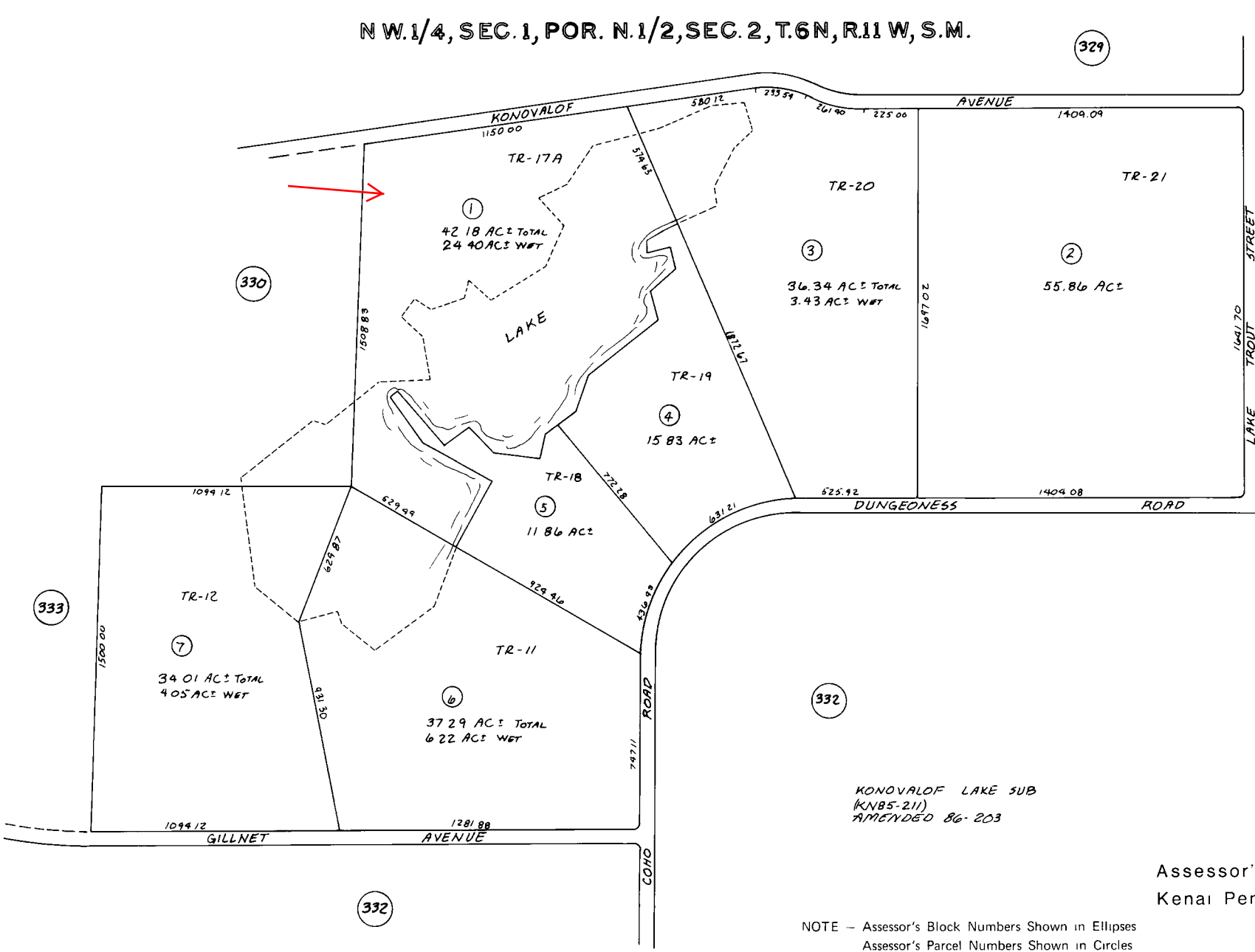


NW.1/4, SEC. 1, POR. N.1/2, SEC. 2, T.6N, R.11 W, S.M.

017-331



BK 13

KONOVALOF LAKE SUB  
(KNBS-211)  
AMENDED 86-203

Assessor's Map  
Kenai Peninsula Borough, Alaska

NOTE - Assessor's Block Numbers Shown in Ellipses  
Assessor's Parcel Numbers Shown in Circles