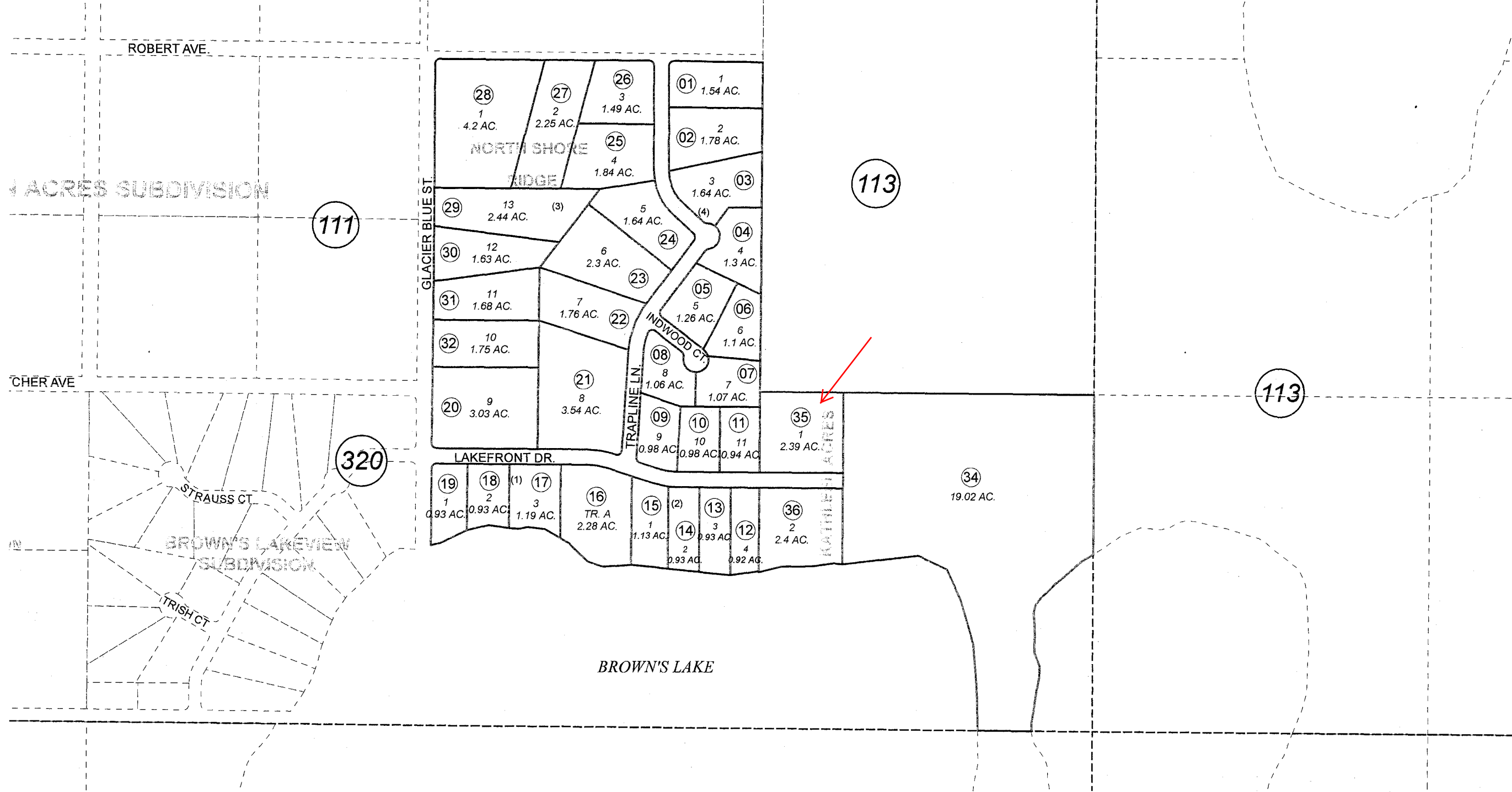


POR. SE1/4, SEC. 29, T05N, R08W, S.M.

066-321



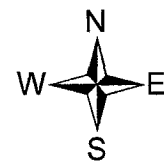
DECEMBER 17, 2007

For 2008 assessment roll

Delete	Add	Revise
--------	-----	--------

To

33	35,36
----	-------



Assessor's Map
Kenai Peninsula Borough

NORTH SHORE RIDGE SUB KN0860014
KATHLEEN ACRES KN2007122

This map is prepared for Kenai Peninsula Borough Assessing Dept. use only and is not intended for conveyance nor is it a survey.
Note- Assessor's block Numbers Shown in Elipses
Assessor's Parcel Numbers Shown in Circles