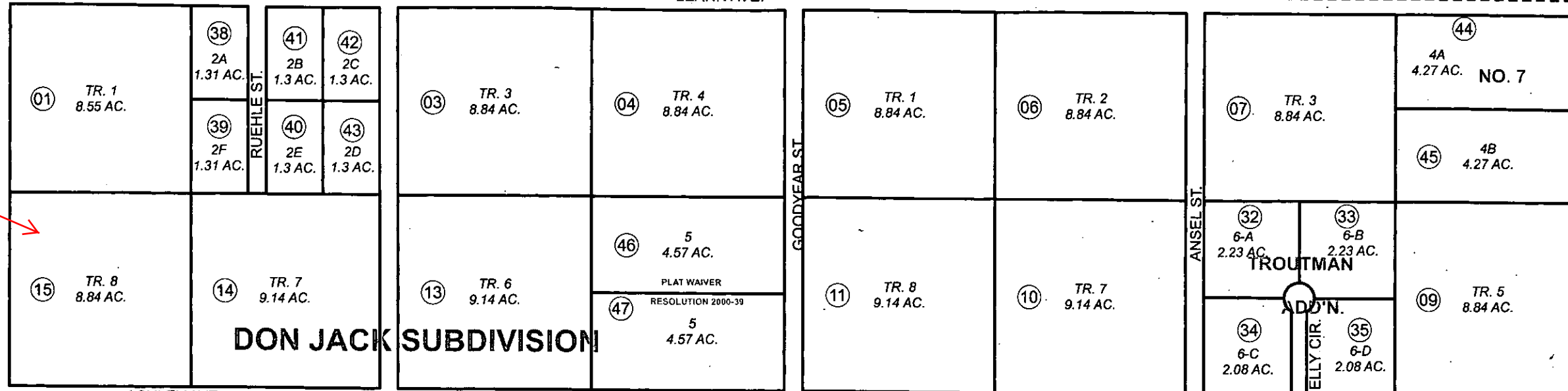


N1/2, SEC. 30, T05N, R08W, S.M.

066-114

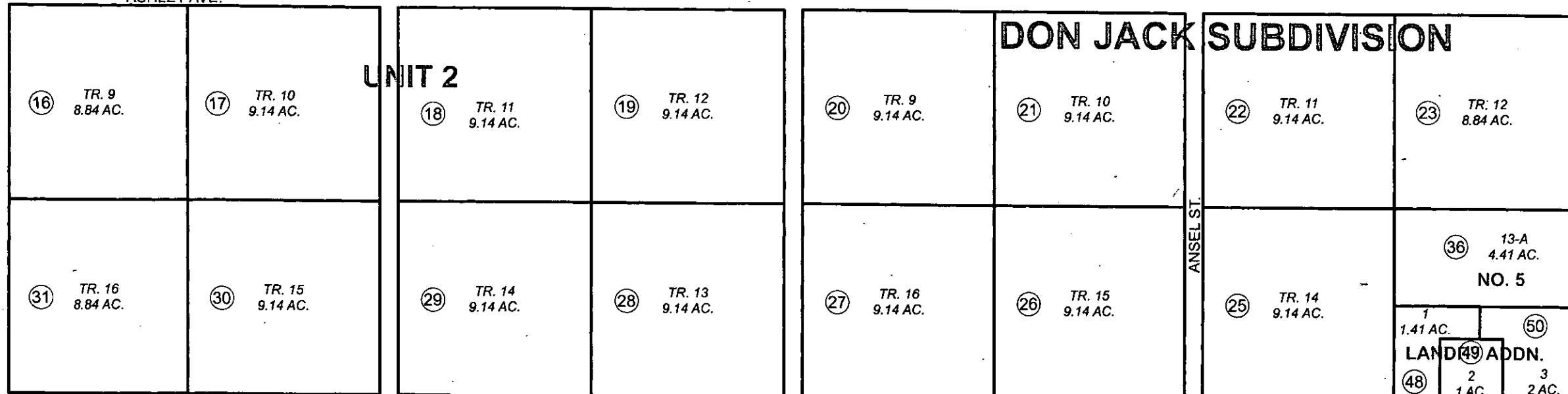
102

LEANN AVE.



040

ASHLEY AVE.



ROBERT AVE.

450

430

DIKEN ST.

431

APRIL 13, 2011

For 2011 assessment roll		
Delete	Add	Revise
To		34, 35
(CORRECTED LOT NO.'S)		



1 inch = 410 feet

Assessor's Map
Kenai Peninsula Borough

DON JACK SUB KN0740119
 DON JACK SUB UNIT 2 KN0750079
 DON JACK SUB TROUTMAN ADDN KN0840114
 DON JACK SUB NO 5 KN0840200
 DON JACK SUB 1985 SUB OF TR 2 UNIT 2 & KN0860082
 DON JACK SUB NO 7 KN0890039
 DON JACK SUB LANDRY ADDN KN2008113

This map is prepared for Kenai Peninsula Borough Assessing Dept. use only and is not intended for conveyance nor is it a survey.

Note- Assessor's block Numbers Shown in Ellipses
 Assessor's Parcel Numbers Shown in Circles