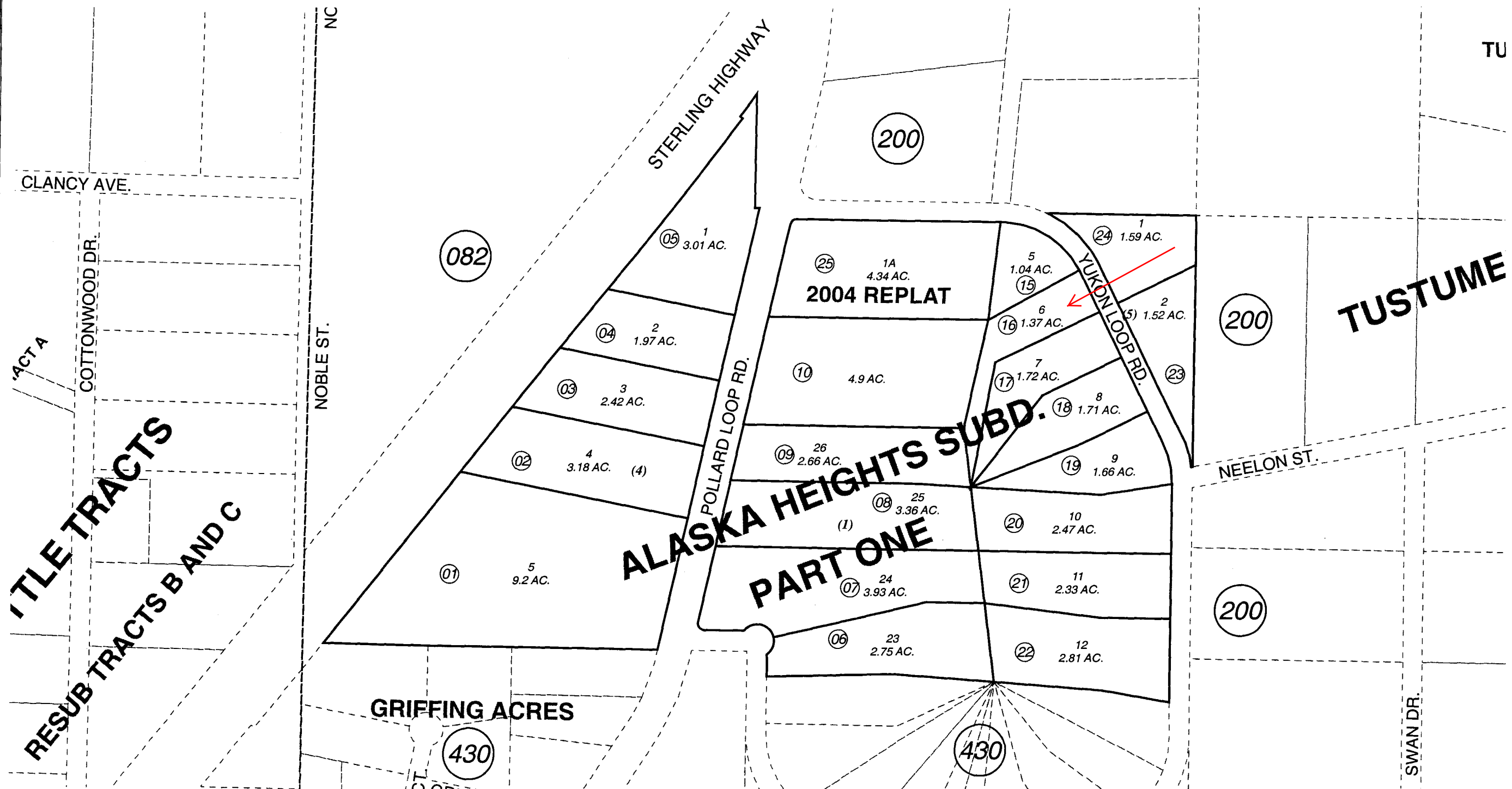


POR. SEC. 20, T03N, R11W, S.M.

133-420

TU



'TLE TRACTS
RESUB TRACTS B AND C

ALASKA HEIGHTS SUBD. PART ONE

TUSTUME

GRIFFING ACRES



DATE: Jan 04, 2005

For 2005 assessment roll		
Delete	Add	Revise
To		
11-14	25	

Assessor's Map
Kenai Peninsula Borough

ALASKA HEIGHTS SUB PART 1 KN0780084
ALASKA HEIGHTS SUB 2004 REPLAT KN2004123

This map is prepared for Kenai Peninsula Borough Assessing Dept. use only and is not intended for conveyance nor is it a survey.
 Note- Assessor's block Numbers Shown in Elipses
 Assessor's Parcel Numbers Shown in Circles