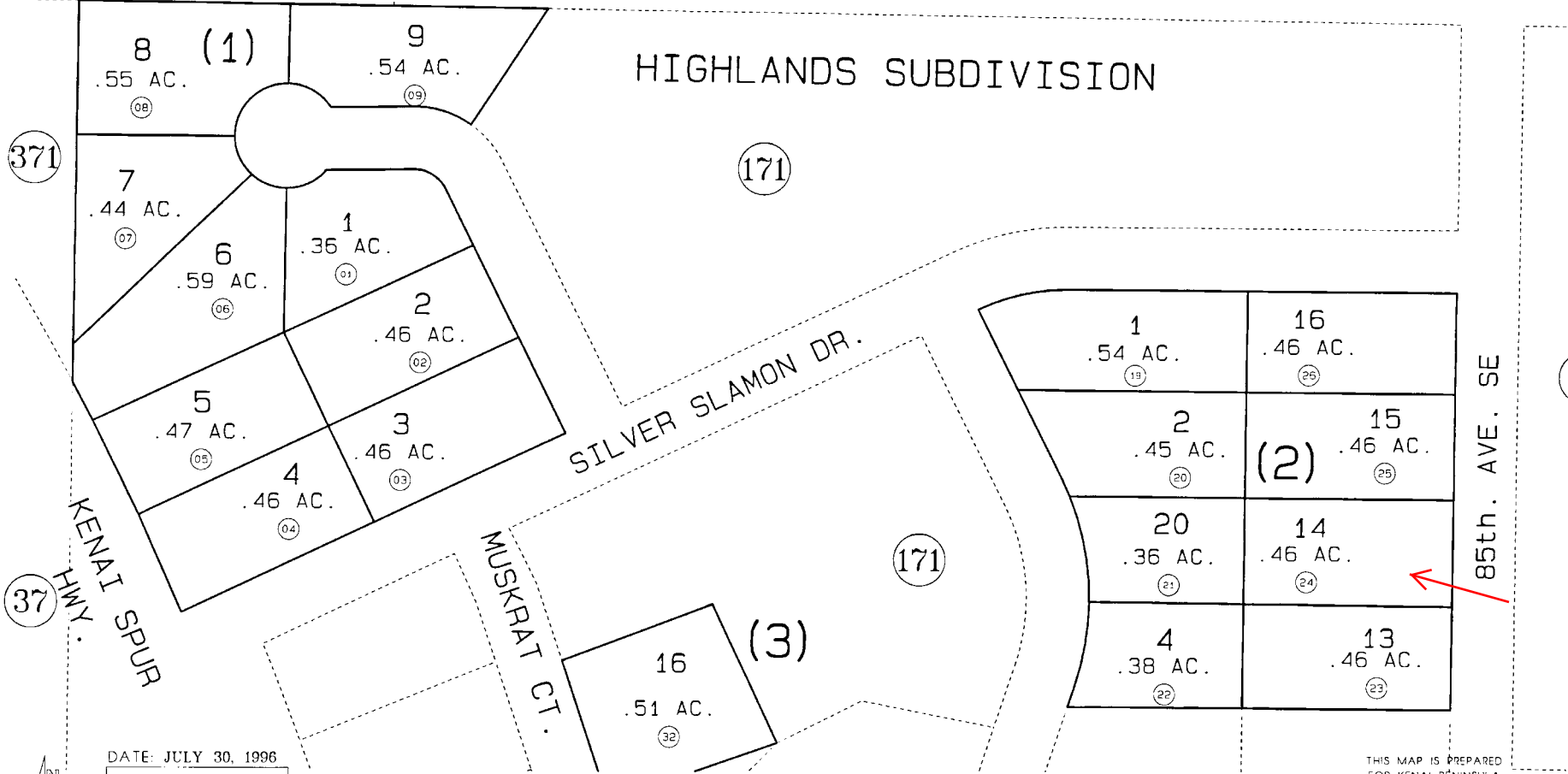


(47)

K ST. S.E.

SEC. 7
SEC. 8

HIGHLANDS SUBDIVISION



DATE: JULY 30, 1996

FOR 1997 ASSESSMENT ROLL

| DELETE | ADD | REVISED |
|--------|-----|---------|
| | | |

HIGHLANDS KN001542

| | | |
|-------|---------|----|
| 10-18 | TO | TO |
| 27-31 | 049-171 | |

Assessor's Map
Kenai Peninsula Borough

THIS MAP IS PREPARED FOR KENAI PENINSULA BOROUGH ASSESSING DEPT. USE ONLY AND IS NOT INTENDED FOR ANY OTHER USE OR REPRESENTATION

NOTE - Assessor's Block Numbers Shown in Ellipses
Assessor's Parcel Numbers Shown in Circles