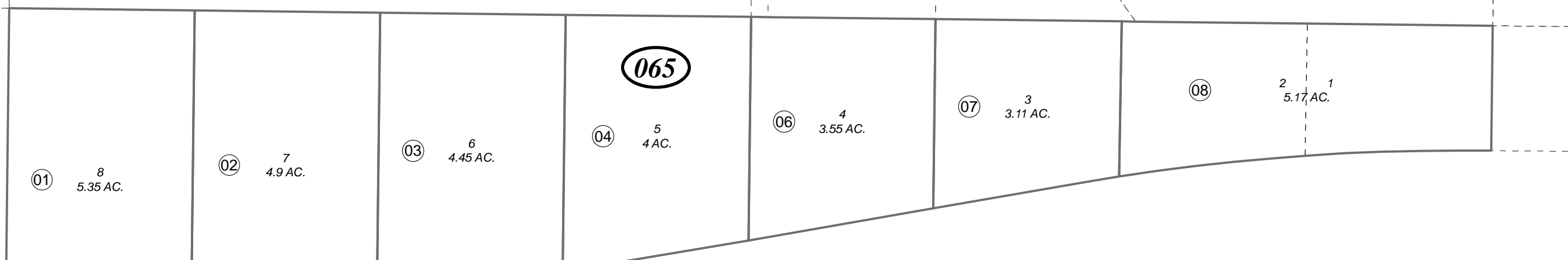


POR. S1/2 SEC. 12, T05N, R09W, S.M.

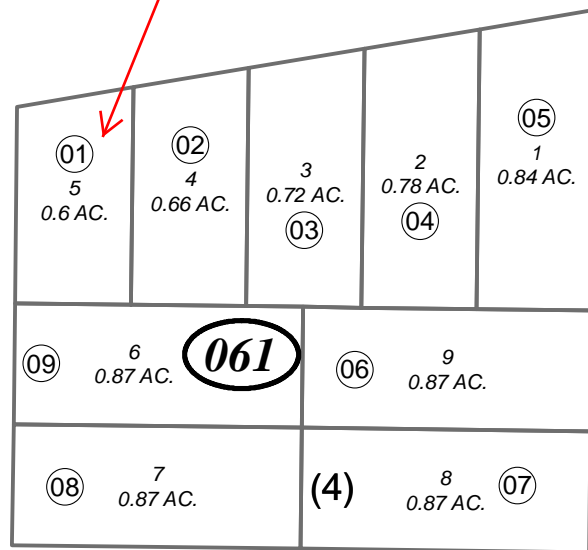
063-060

330

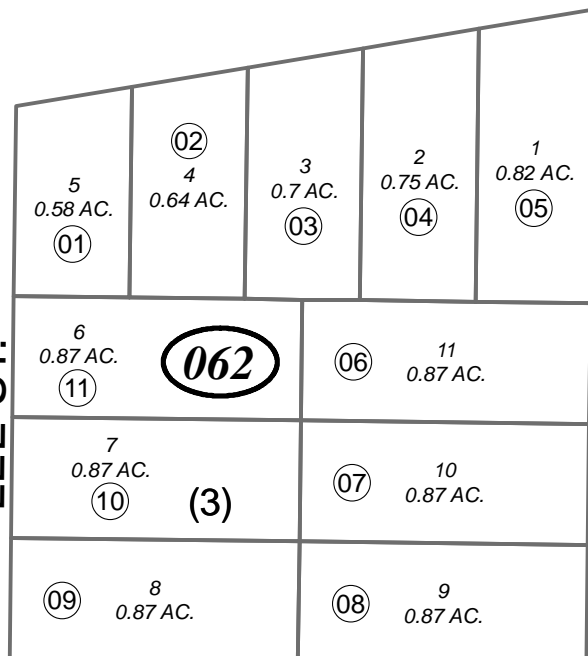


STERLING HWY.

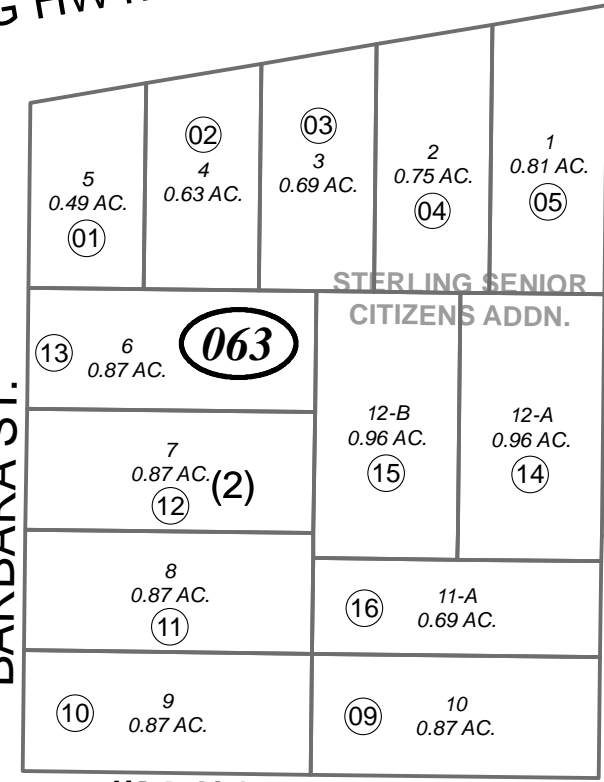
770



LEE ST.



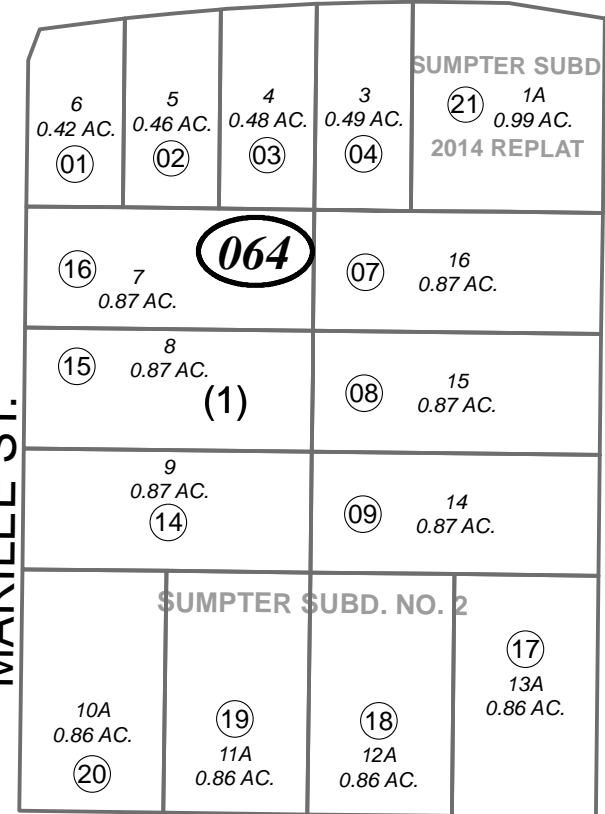
BARBARA ST.



JIM AVE.

STERLING SENIOR CITIZENS ADDN.

MARILEE ST.

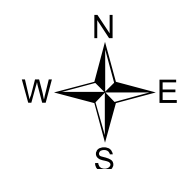


ELVA ST.

530

PORTION OF SUMPTER SUBD.

070



0 100 200 Feet

OCTOBER 2, 2014

For 2015 assessment roll		
Delete	Add	Revise
	To	
06405		
06406	06421	

Assessor's Map Kenai Peninsula Borough

SUMPTER SUB KN0000525
 SUMPTER SUB NO 2 KN0860059
 SUMPTER SUB STERLING SENIOR CITIZENS ADDN KN2007143
 SUMPTER SUB 2014 REPLAT KN2014058

This map is prepared for Kenai Peninsula Borough Assessing Dept. use only and is not intended for conveyance nor is it a survey.
 Note- Assessor's block Numbers Shown in Ellipses
 Assessor's Parcel Numbers Shown in Circles