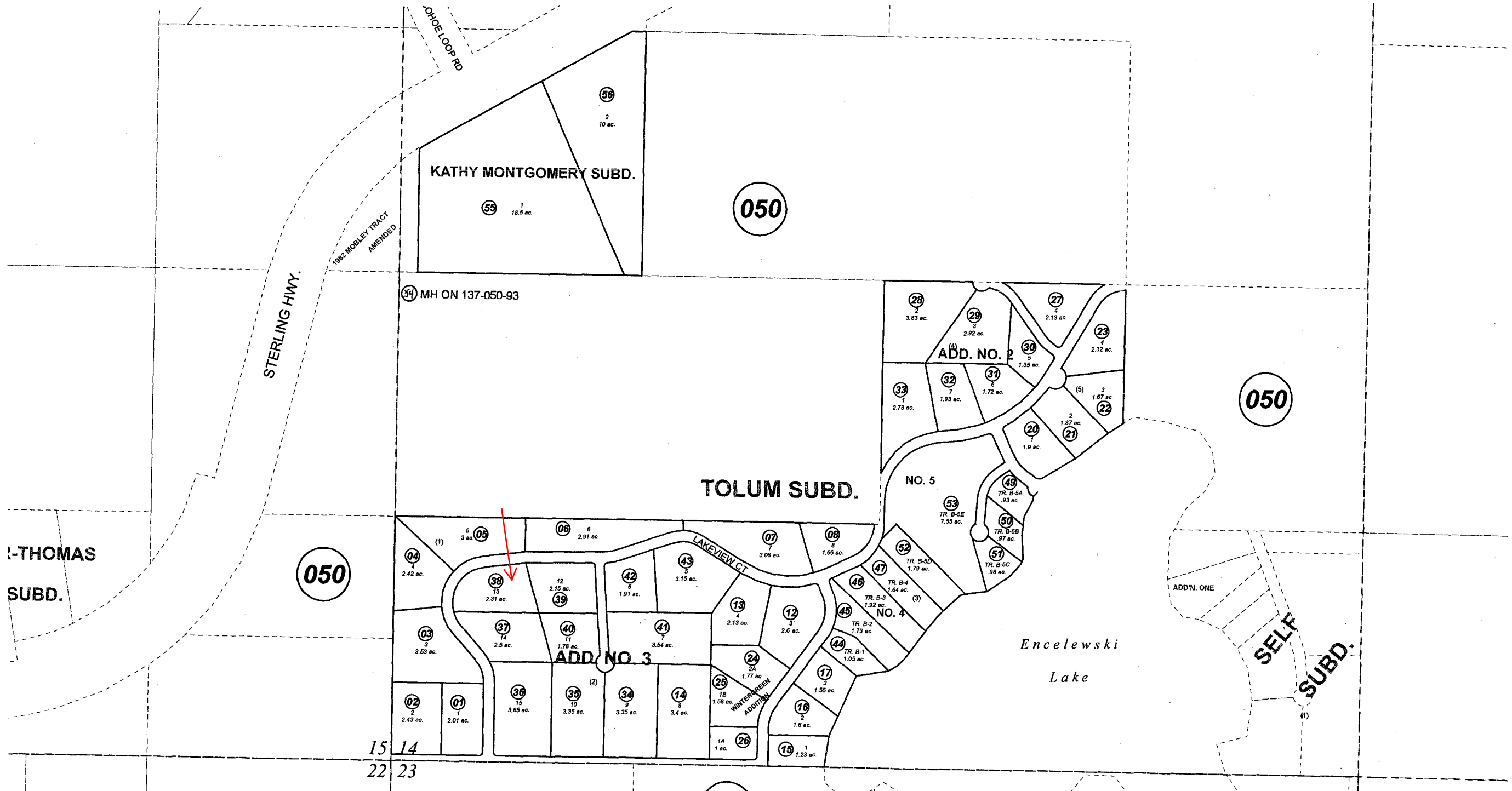


POR. SE1/4 & SW1/4 SEC. 14, T02N, R12W, S.M.

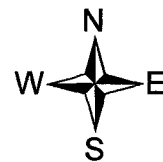
137-051



DECEMBER 29, 2008

For 2009 assessment roll

Delete	Add	Revise
	To	
05095	55,56	



Assessor's Map
Kenai Peninsula Borough

050

TOLUM SUB □ KN0840084
 TOLUM SUB WINTERGREEN ADDN □ KN0850130
 TOLUM SUB ADDN NO 2 □ KN0860172
 TOLUM SUB ADDN NO 3 □ KN0870107
 TOLUM SUB NO 4 □ KN2001070
 TOLUM SUB NO 5 KN2002017
 KATHY MONTGOMERY SUB KN2008133

Note- Assessor's block Numbers Shown in Ellipses
 Assessor's Parcel Numbers Shown in Circles

This map is prepared
 for Kenai Peninsula
 Borough Assessing Dept.
 use only and is not
 intended for conveyance
 nor is it a survey.