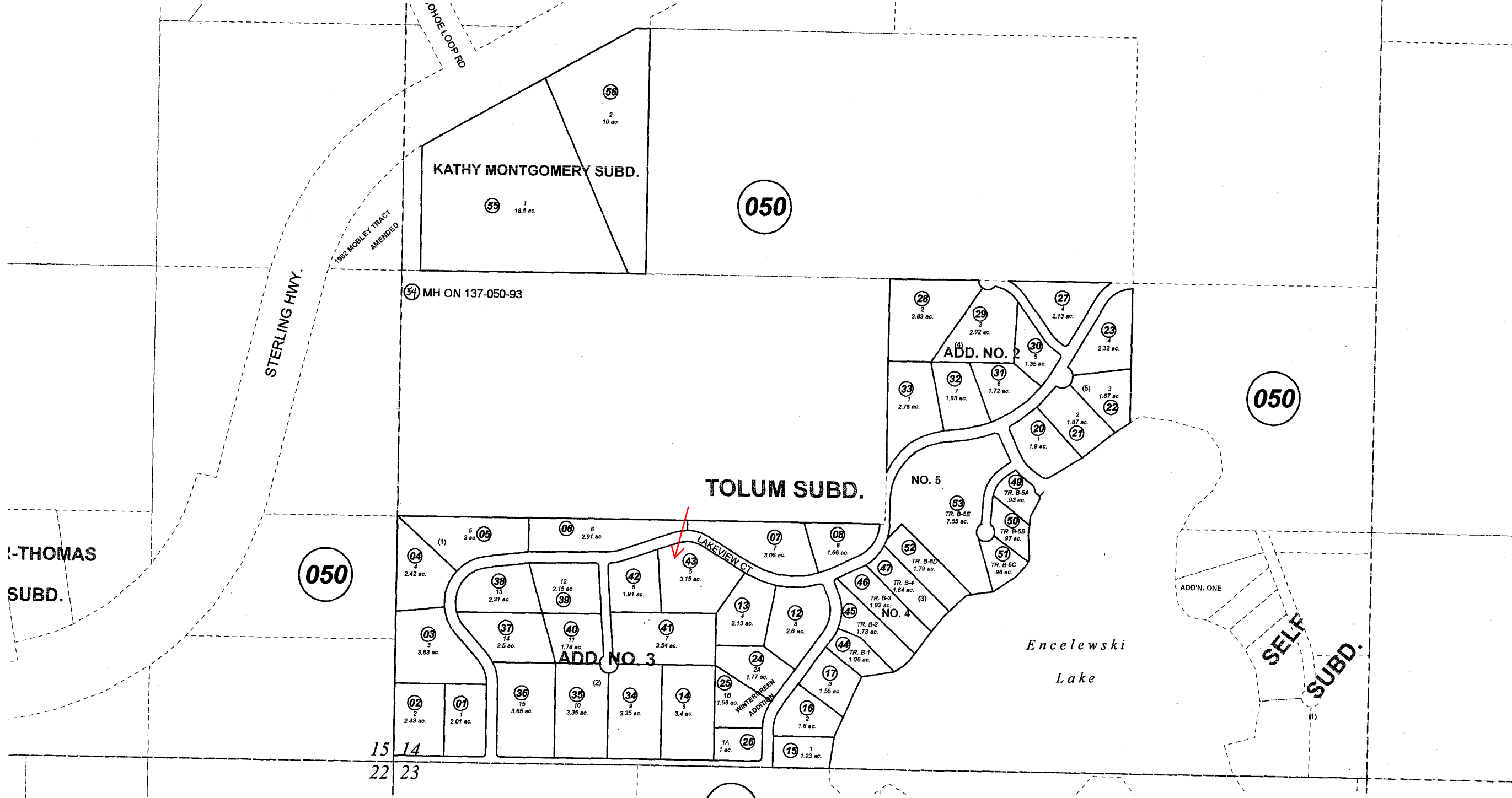


POR. SE1/4 & SW1/4 SEC. 14, T02N, R12W, S.M.

137-051

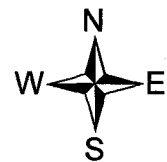


DECEMBER 29, 2008

For 2009 assessment roll

Delete	Add	Revise
--------	-----	--------

To		
05095	55,56	



Assessor's Map
Kenai Peninsula Borough

TOLUM SUB □ KN0840084
 TOLUM SUB WINTERGREEN ADDN □ KN0850130
 TOLUM SUB ADDN NO 2 □ KN0860172
 TOLUM SUB ADDN NO 3 □ KN0870107
 TOLUM SUB NO 4 □ KN2001070
 TOLUM SUB NO 5 KN2002017
 KATHY MONTGOMERY SUB KN2008133

This map is prepared for Kenai Peninsula Borough Assessing Dept. use only and is not intended for conveyance nor is it a survey.
 Note- Assessor's block Numbers Shown in Ellipses
 Assessor's Parcel Numbers Shown in Circles