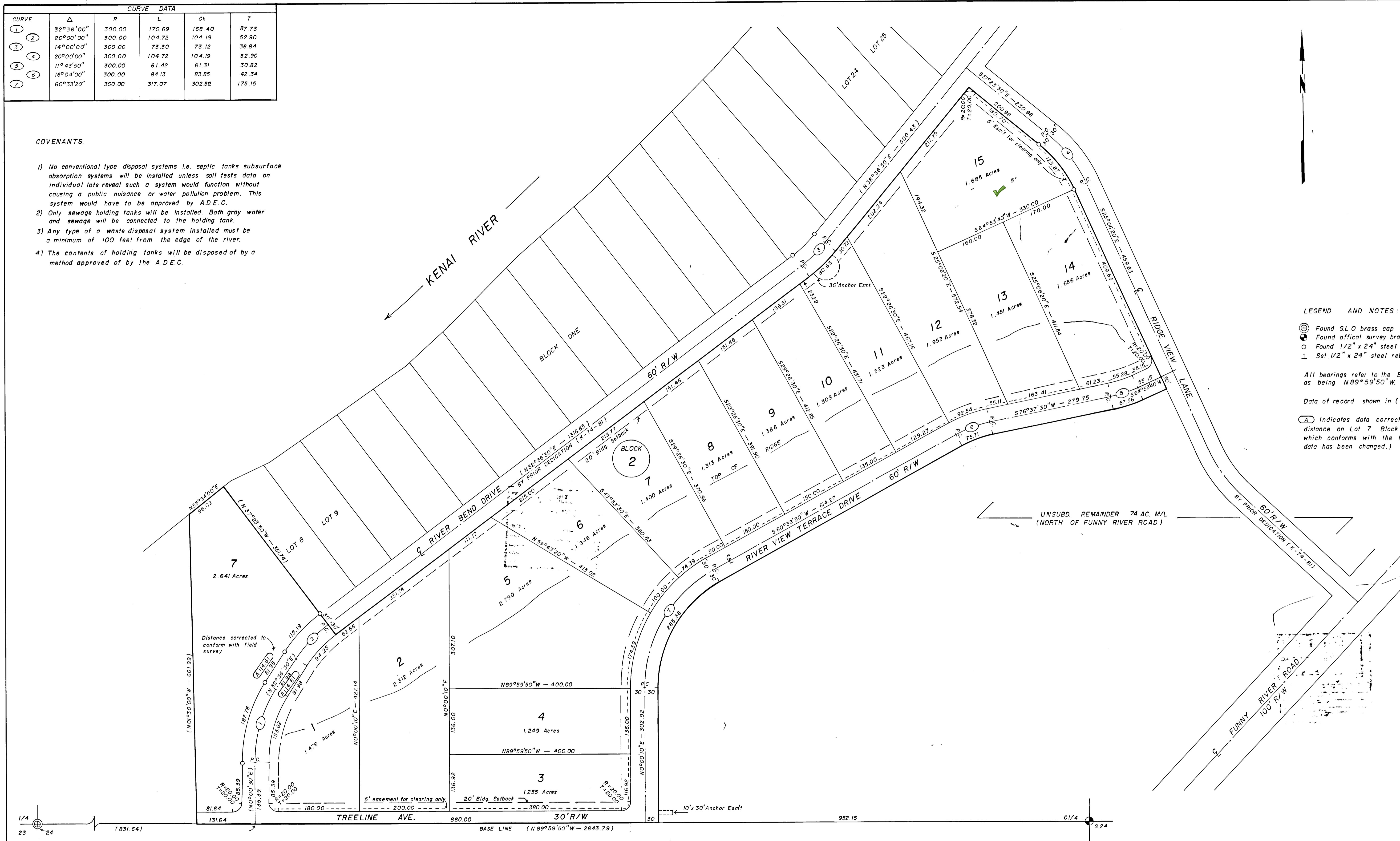
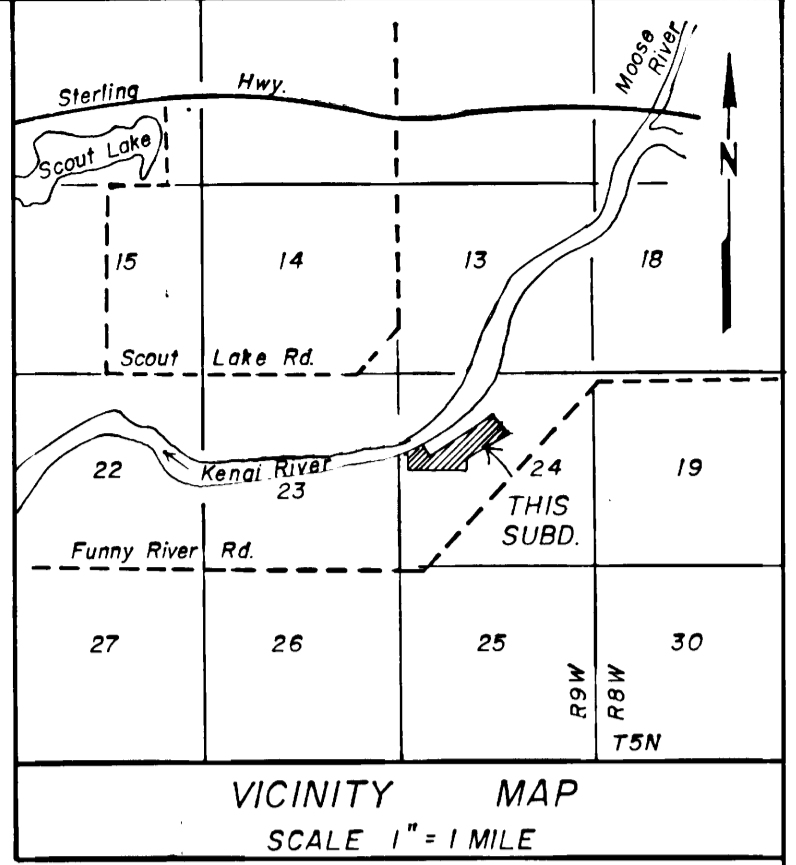


CURVE DATA					
CURVE	Δ	R	L	Ch	T
1	32°36'00"	300.00	170.69	168.40	87.73
2	20°00'00"	300.00	104.72	104.19	52.90
3	14°00'00"	300.00	73.30	73.12	36.84
4	20°00'00"	300.00	104.72	104.19	52.90
5	11°43'50"	300.00	61.42	61.31	30.82
6	16°04'00"	300.00	84.13	83.85	42.34
7	60°33'20"	300.00	317.07	302.92	175.15

COVENANTS

- 1) No conventional type disposal systems i.e. septic tanks subsurface absorption systems will be installed unless soil tests data on individual lots reveal such a system would function without causing a public nuisance or water pollution problem. This system would have to be approved by A.D.E.C.
- 2) Only sewage holding tanks will be installed. Both gray water and sewage will be connected to the holding tank.
- 3) Any type of a waste disposal system installed must be a minimum of 100 feet from the edge of the river.
- 4) The contents of holding tanks will be disposed of by a method approved of by the A.D.E.C.



LEGEND AND NOTES:

- ⊕ Found G.L.O. brass cap monument.
- ⊙ Found official survey brass cap monument.
- Found 1/2" x 24" steel rebar.
- └ Set 1/2" x 24" steel rebar at all lot corners.

All bearings refer to the E-W centerline of Section 24 as being N89°59'50"W.

Data of record shown in ()

(A) Indicates data corrected by this plat (The tangent distance on Lot 7 Block 1 has been corrected to 81.98 which conforms with the field survey of Part One, no other data has been changed.)

75-84
RECORDED - FILED
 Kenai REC. DIST.
 DATE 8/26 1975
 TIME 2:36 P.M.
 Submitted by KPB
 Address



CERTIFICATE OF OWNERSHIP AND DEDICATION

We hereby certify that we are the owners of said property, and request the approval of this plat showing such easements for public utilities, roadways, and or streets dedicated by us for public use.

Date August 26, 1975

Kenneth J. Reed - Data Rec'd
Richard B. Tower
 owners of Lot 7 Block 1

NOTARY'S ACKNOWLEDGEMENT

Subscribed and sworn before me this 26 day of August, 1975.

My commission expires August 6, 1978

Michelle Hallhofer
 notary public for Alaska

PLAT APPROVAL

Plat approved by the Commission this 18th day of August, 1975.

Stanley S. McLane
 Mayor

RIVER BEND RIDGE SUBDIVISION PART TWO AND LOT 7 BLOCK 1 PART ONE AMENDED

River Bend Development Co., owner
 3511 Tanglewood, Anchorage, Ak. 99503

DESCRIPTION
 26.825 ACRES SITUATED IN NW1/4, W1/2 NE1/4 SECTION 24, T5N, R9W, S.M. AK., AND KENAI PENINSULA BOROUGH.

Surveyed by - McLane and Associates
 Soldotna, Ak.

DATE OF SURVEY June 21 - Aug 1, 1975 SCALE 1" = 100' BK NO. 74 - 2