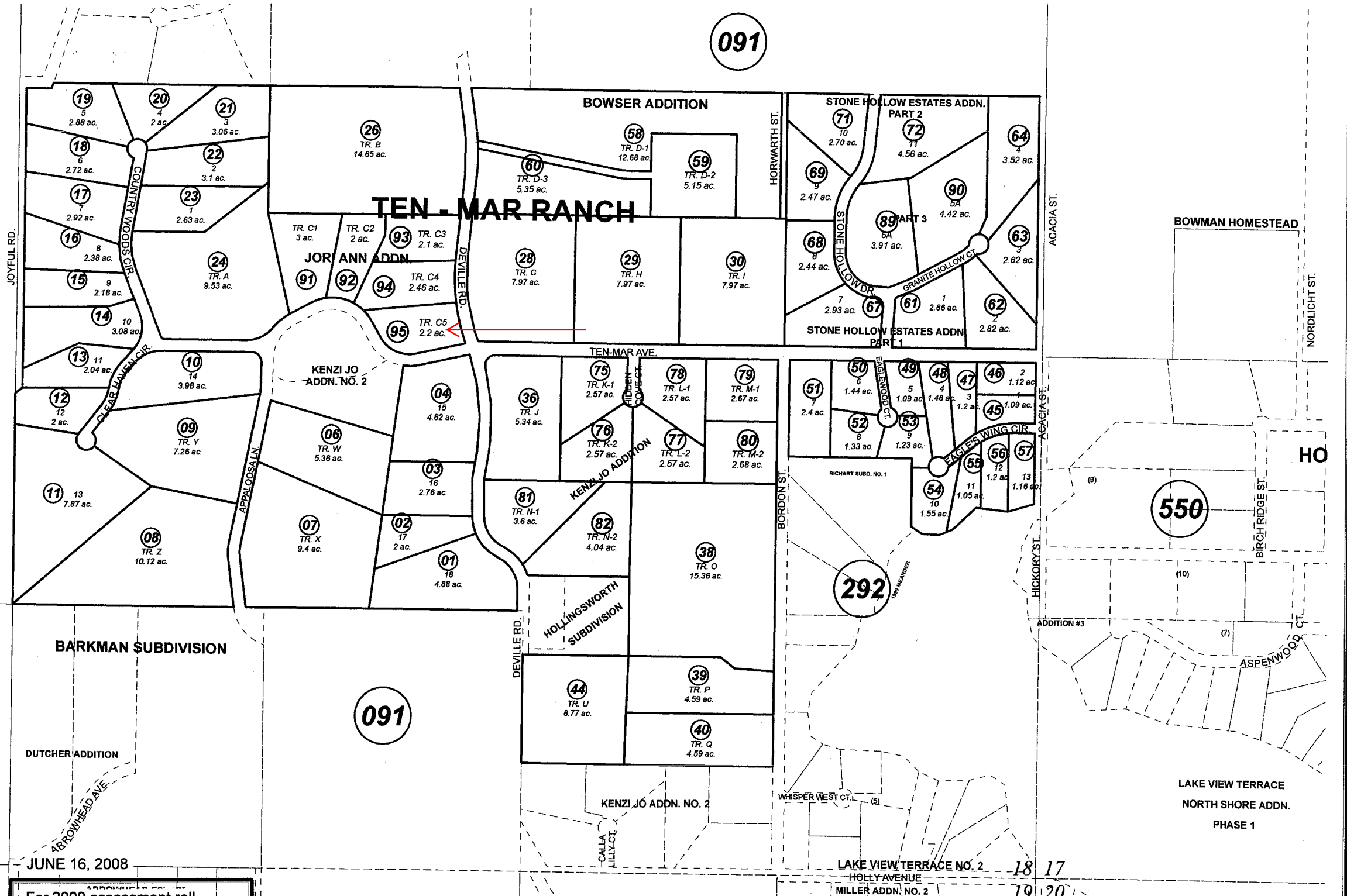


ON 97-21

**BK**  
**058**



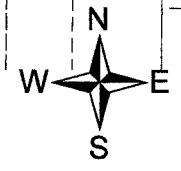
JUNE 16, 2008

For 2009 assessment roll		
Delete	Add	Revise
To		
25	91-95	
73,		
74,		
83-88	063-600+	

Assessor's Map  
Kenai Peninsula Borough

- TEN - MAR RANCH KN2000051
- EAGLES LANDING KN2000012
- TEN - MAR RANCH BOWSER ADDN KN2004115
- TEN - MAR RANCH STONE HOLLOW ESTATES ADDN PART 1 KN2005036
- TEN - MAR RANCH STONE HOLLOW ESTATES ADDN PART 2 KN2006021
- TEN - MAR RANCH SUB KENZI JO ADDN KN2006081
- TEN - MAR RANCH STONE HOLLOW ESTATES ADDN PART 3 KN2006128
- TEN-MAR RANCH SUB JORI ANN ADDN KN2008011

**600**



This map is prepared for Kenai Peninsula Borough Assessing Dept. use only and is not intended for conveyance nor is it a survey.  
Note- Assessor's block Numbers Shown in Ellipses  
Assessor's Parcel Numbers Shown in Circles