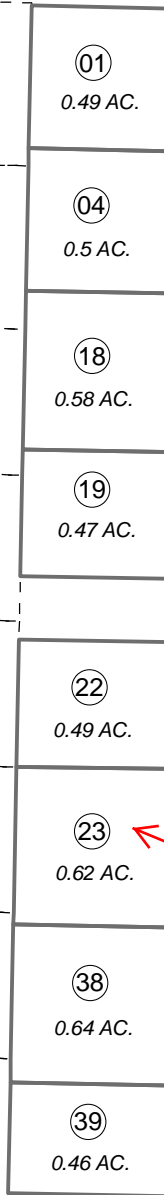


S 1/2 SE 1/4, SEC. 14, T06N, R12W, S.M.

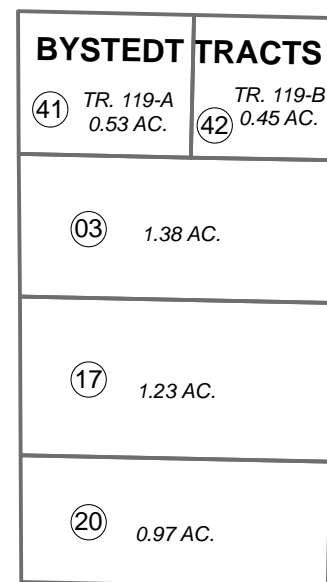
017-170

KILARNEY AVE

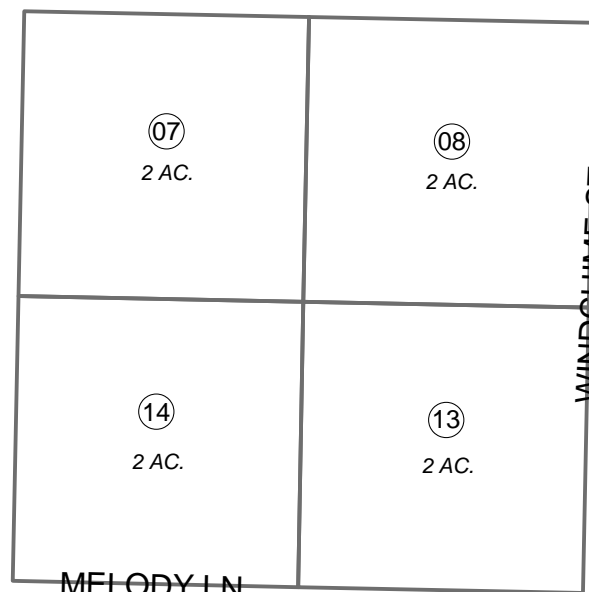
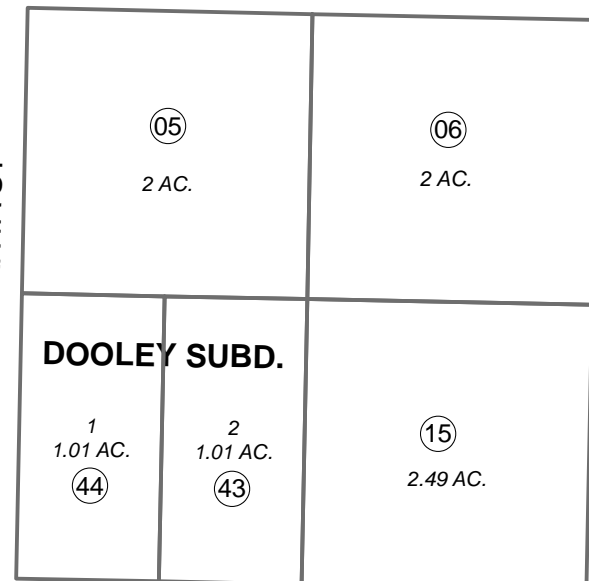
BYSTEDT AVE



KENAI SPUR HWY

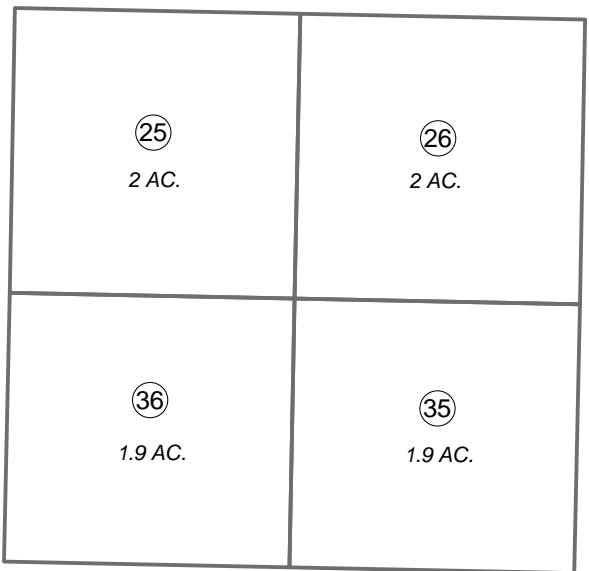
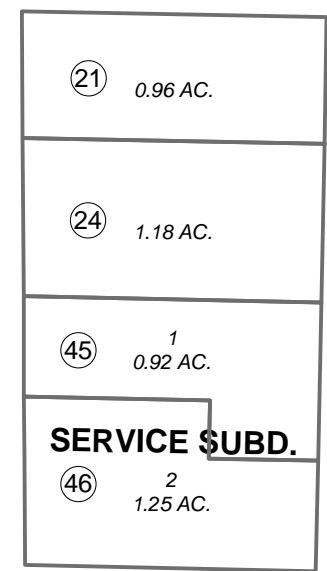
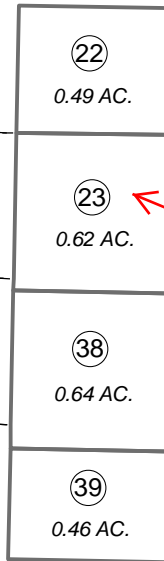
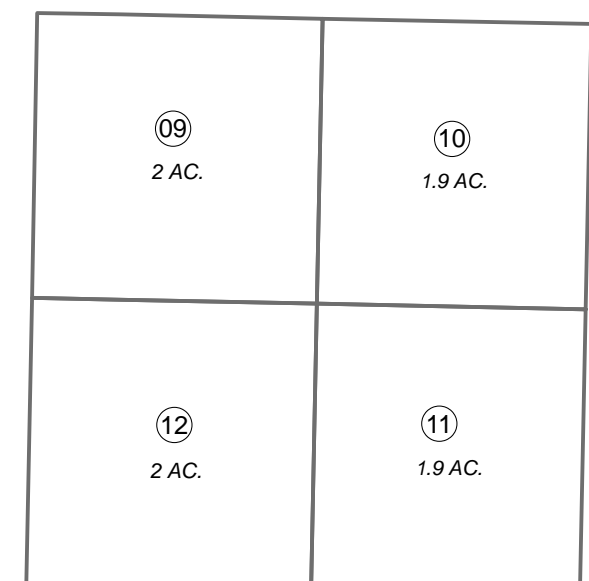


BANTA ST

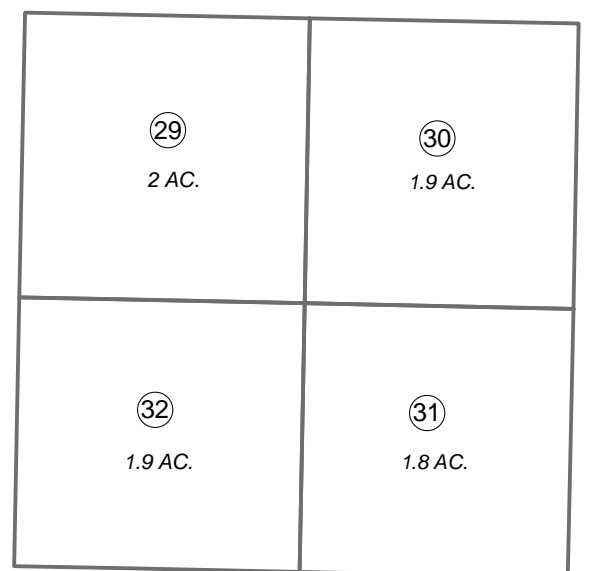
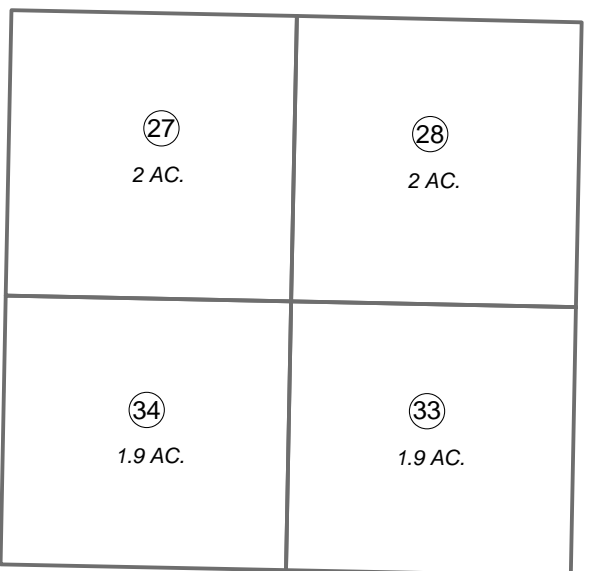


MELODY LN

WINDCHIME ST



GALANKIN ST



PANORAMA AVE

111

(5)

160

200

180



0 50 100 200 Feet

FEBRUARY 12, 2014

For 2014 assessment roll		
Delete	Add	Revise
To		15
(ACREAGE CHANGE)		

Assessor's Map  
Kenai Peninsula Borough

BYSTEDT TRACTS KN0790134  
 DOOLEY SUB KN0870005  
 SERVICE SUB KN0950051  
 RECORD OF SURVEY KN2013025

This map is prepared for Kenai Peninsula Borough Assessing Dept. use only and is not intended for conveyance nor is it a survey.

Note- Assessor's block Numbers Shown in Ellipses  
Assessor's Parcel Numbers Shown in Circles