

POR. NW1/4 NW1/4 SEC. 30, T05N, R09W, S.M.

063-280

24 19  
25 30

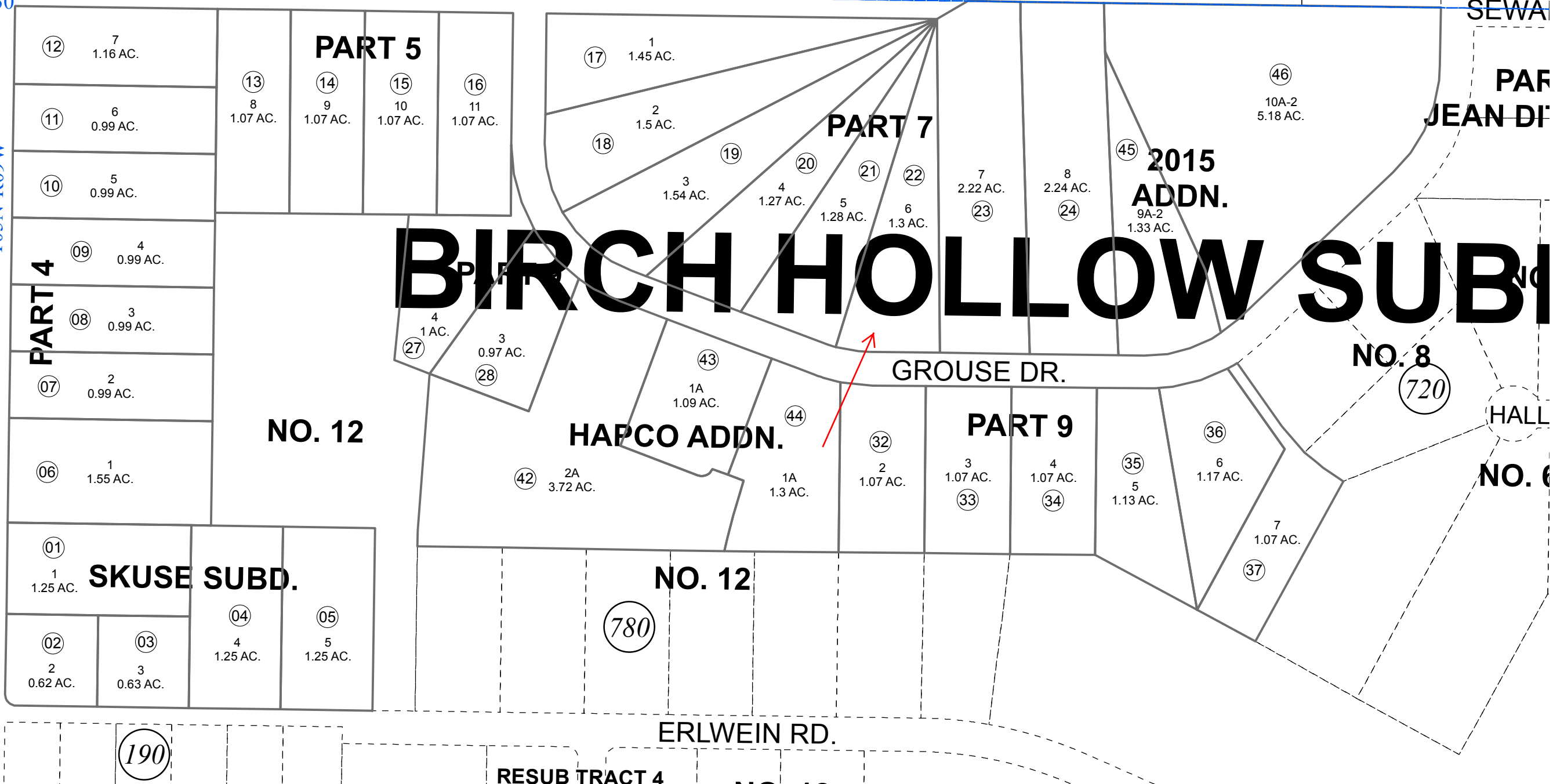
FOX TRAIL RD. W

(540)

SEWA

T05N-R10W  
T05N-R09W

BK  
058



DECEMBER 23, 2015

For 2016 assessment roll		
Delete	Add	Revise
To		
40,41	45,46	

Assessor's Map  
Kenai Peninsula Borough

- SKUSE SUB KN0720027
- BIRCH HOLLOW SUB PART 4 KN0810030
- BIRCH HOLLOW SUB PART 5 KN0810124
- BIRCH HOLLOW SUB PART 7 KN0840161
- BIRCH HOLLOW SUB PART 9 KN0850177
- BIRCH HOLLOW SUB HORTON ADDN REPLAT KN0920017
- BIRCH HOLLOW SUBD HAPCO ADDN KN0950074
- BIRCH HOLLOW SUB 2015 ADDN KN2015086

This map is prepared for Kenai Peninsula Borough Assessing Dept. use only and is not intended for conveyance nor is it a survey.

Note- Assessor's block Numbers Shown in Ellipses  
Assessor's Parcel Numbers Shown in Circles



0 50 100 200 Feet