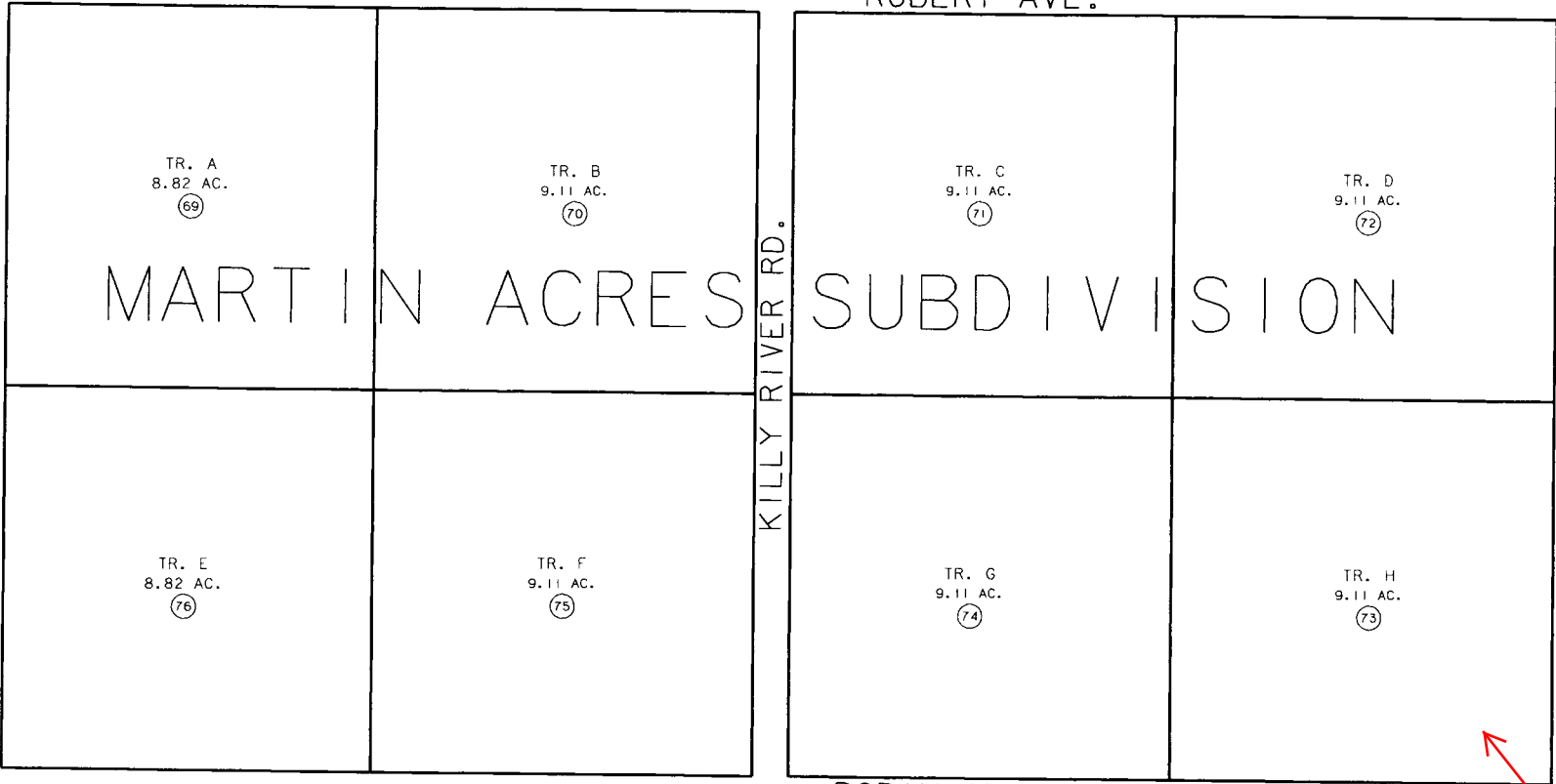


115

ROBERT AVE.



TR. A  
8.82 AC.  
69

TR. B  
9.11 AC.  
70

TR. C  
9.11 AC.  
71

TR. D  
9.11 AC.  
72

MARTIN ACRES SUBDIVISION

TR. E  
8.82 AC.  
76

TR. F  
9.11 AC.  
75

TR. G  
9.11 AC.  
74

TR. H  
9.11 AC.  
73

KILLY RIVER RD.

GLACIER BLUE AVE.

ROBIN AVE.

43

LAKE ST.

321

32



DATE: AUG. 24, 1993

FOR 19 <u>94</u> ASSESSMENT ROLL
DELETE    ADD    REVISED
TO
REVISED
PAGE

NOTE - Assessor's Block Numbers Shown In Ellipses    **Assessor's Map**  
 Assessor's Parcel Numbers Shown In Circles    **Kenai Peninsula Borough**

THIS MAP IS PREPARED FOR KENAI PENINSULA BOROUGH ASSESSING DEPT. USE ONLY AND IS NOT INTENDED FOR ANY OTHER USE OR REPRESENTATION

