

S 1/2 SEC. 10 & POR. N 1/2 SEC. 15, T02S, R12W, S.M.

185-518

SON AVE.

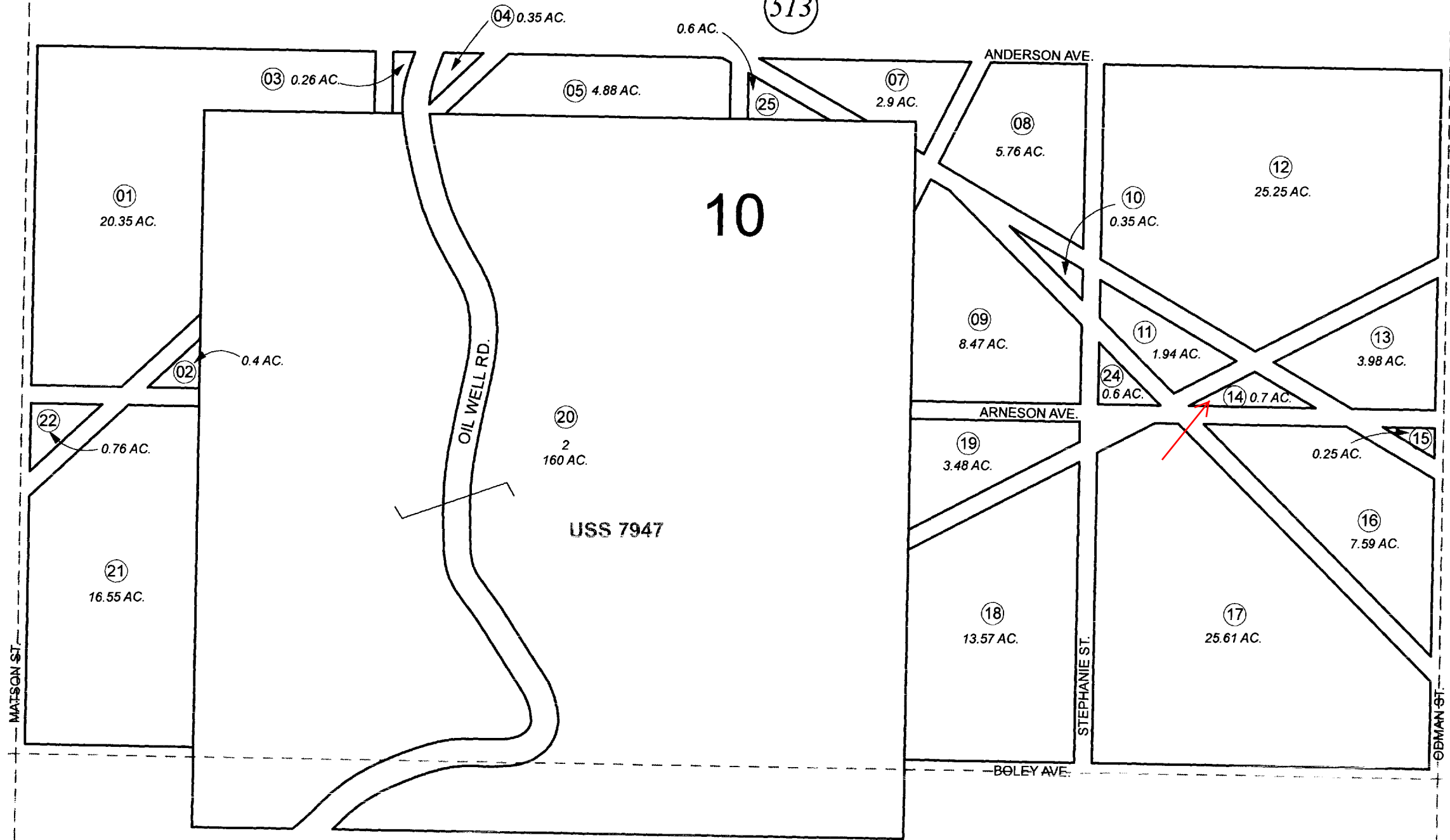
LAND SUBD.

RES. 93-07

AVE. 498

RES

AVE.



514

517

RECORD OF

519

15



JANUARY 13, 2011

For 2011 assessment roll		
Delete	Add	Revise
06,23	24,25	01-05, 07-19 21-22
(ACREAGE CHANGE)		

Assessor's Map
Kenai Peninsula Borough

US SURVEY 7947

This map is prepared for Kenai Peninsula Borough Assessing Dept. use only and is not intended for conveyance nor is it a survey.
Note- Assessor's block Numbers Shown in Elipses
Assessor's Parcel Numbers Shown in Circles