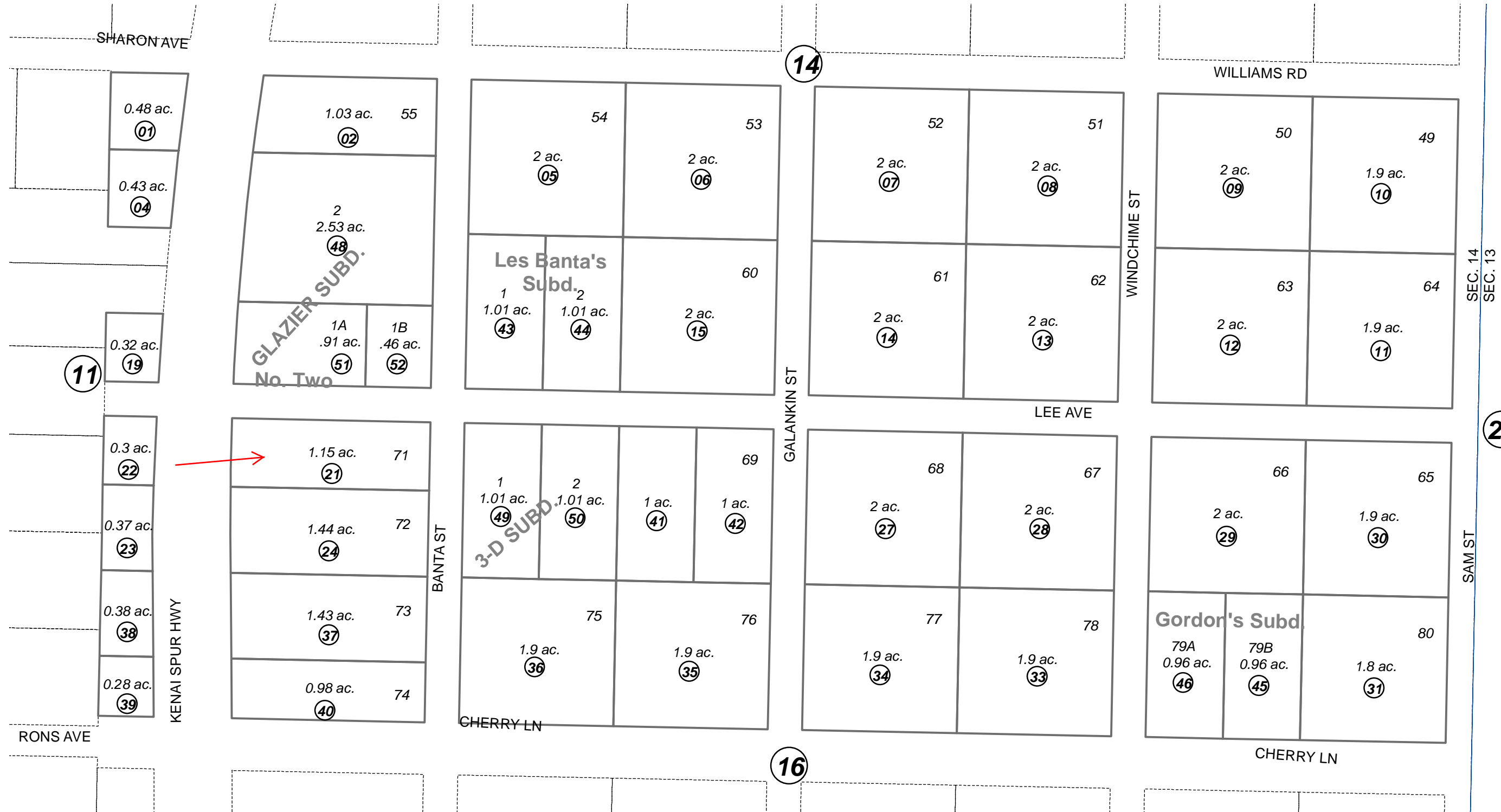


S 1/2 NE 1/4 SEC. 14, T06N, R12W, S.M.

017-150



0 50 100 200 Feet

SEPTEMBER 11, 2013

For 2014 assessment roll		
Delete	Add	Revise
To		37
(ACREAGE CHANGE)		

Assessor's Map  
Kenai Peninsula Borough

LES BANTAS SUB KN0840074  
 GORDONS SUB KN0860187  
 GLAZIER SUB KN0910038  
 3-D SUB KN0910059  
 GLAZIER SUB NO TWO KN2001016  
 RECORD OF SURVEY KN2013054

This map is prepared for Kenai Peninsula Borough Assessing Dept. use only and is not intended for conveyance nor is it a survey.

Note- Assessor's block Numbers Shown in Elipses  
 Assessor's Parcel Numbers Shown in Circles