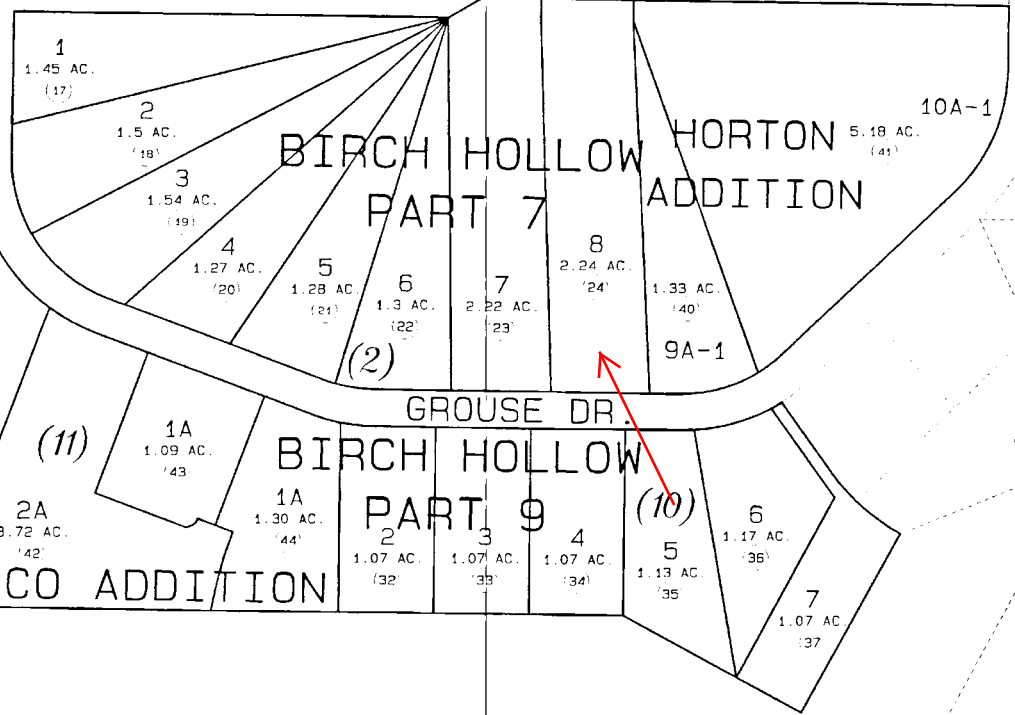
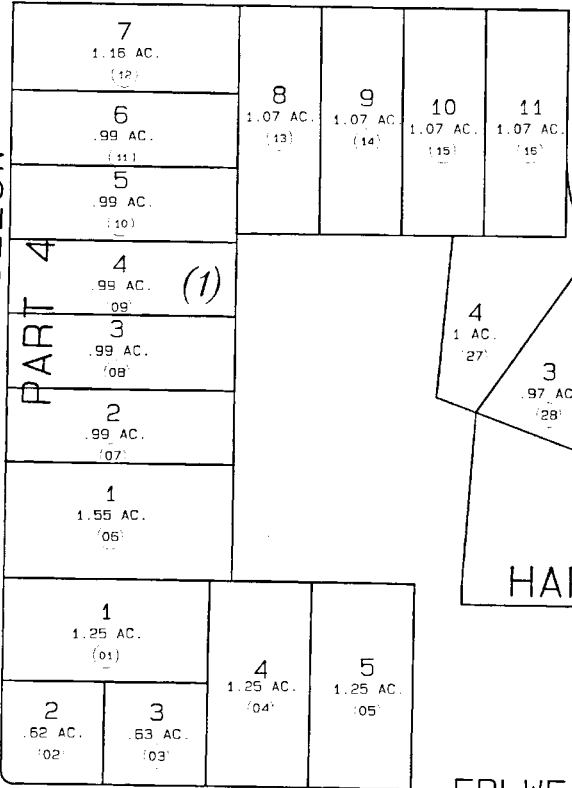


BIRCH HOLLOW  
PART FIVE  
BEAR DR.

9

R10W SEC. 25  
R9W SEC. 30  
BIRCH HOLLOW



57  
040

72

78

SKUSE SUBD.

19

DATE: JAN. 15, 1996

FOR 1996 ASSESSMENT ROLL		
DELETE	ADD	REVISED
29-31	13-15	

Assessor's Map  
Kenai Peninsula Borough

SKUSE KN720027

BIRCH HOLLOW PART 1	KNB10030
BIRCH HOLLOW PART 5	KNB10121
BIRCH HOLLOW PART 7	KNB10161
BIRCH HOLLOW PART 9	KNB50177
BIRCH HOLLOW HORTON ADDN.	KN920017
BIRCH HOLLOW HAPCO ADDN.	KN950074

THIS MAP IS PREPARED FOR KENAI PENINSULA BOROUGH ASSESSING DEPT. USE ONLY AND IS NOT INTENDED FOR ANY OTHER USE OR REPRESENTATION

NOTE - Assessor's Block Numbers Shown In Ellipses  
Assessor's Parcel Numbers Shown In Circles

