

POR. SEC. 22, T05N, R09W, S.M.

063-610

870

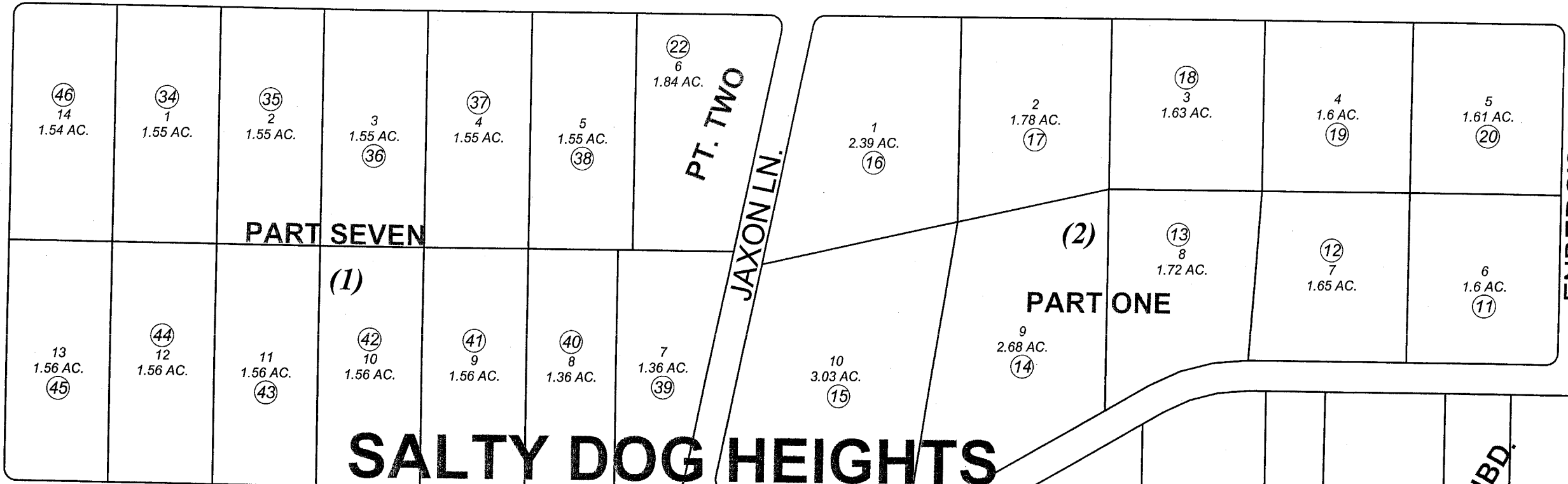
16 15  
21 22

MORGAN RD.

TALLRICO ST.

ENBERG'S ST.

150

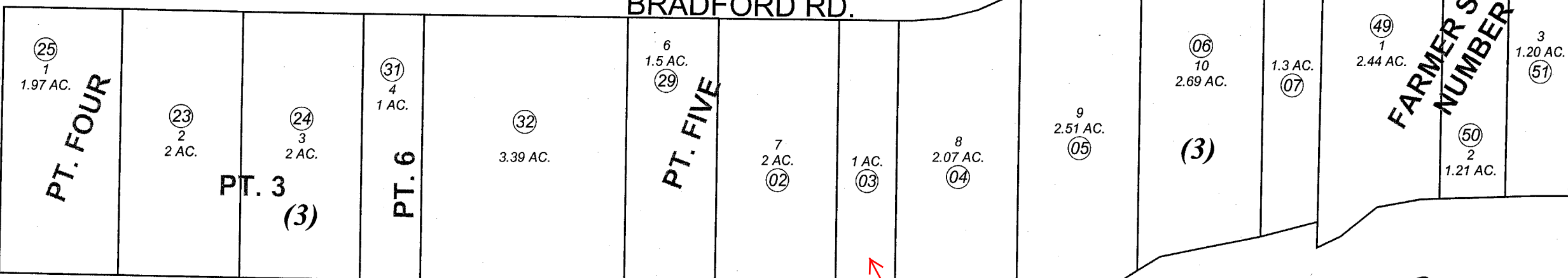


BRADFORD RD.

3D.

480

ERRY CT.



**CAYMAS SUBDIVISION**

611

KENAI RIVER



JANUARY 8, 2004

For 2004 assessment roll		
Delete	Add	Revise
To		
47,48	49-51	

Assessor's Map  
Kenai Peninsula Borough

- SALTY DOG HEIGHTS SUB PART 1 □ KN0780030
- SALTY DOG HEIGHTS PART 2 □ KN0790105
- SALTY DOG HEIGHTS PART 3 □ KN0790143
- SALTY DOG HEIGHTS PART 4 □ KN0800008
- SALTY DOG HEIGHTS PART 5 □ KN0840166
- SALTY DOG HEIGHTS SUB PART 6 □ KN0890045
- SALTY DOG HEIGHTS SUB PART 7 □ KN0920082
- FARMER SUB NO 5 □ KN2003105

This map is prepared for Kenai Peninsula Borough Assessing Dept. use only and is not intended for conveyance nor is it a survey.

Note- Assessor's block Numbers Shown in Elipses  
Assessor's Parcel Numbers Shown in Circles