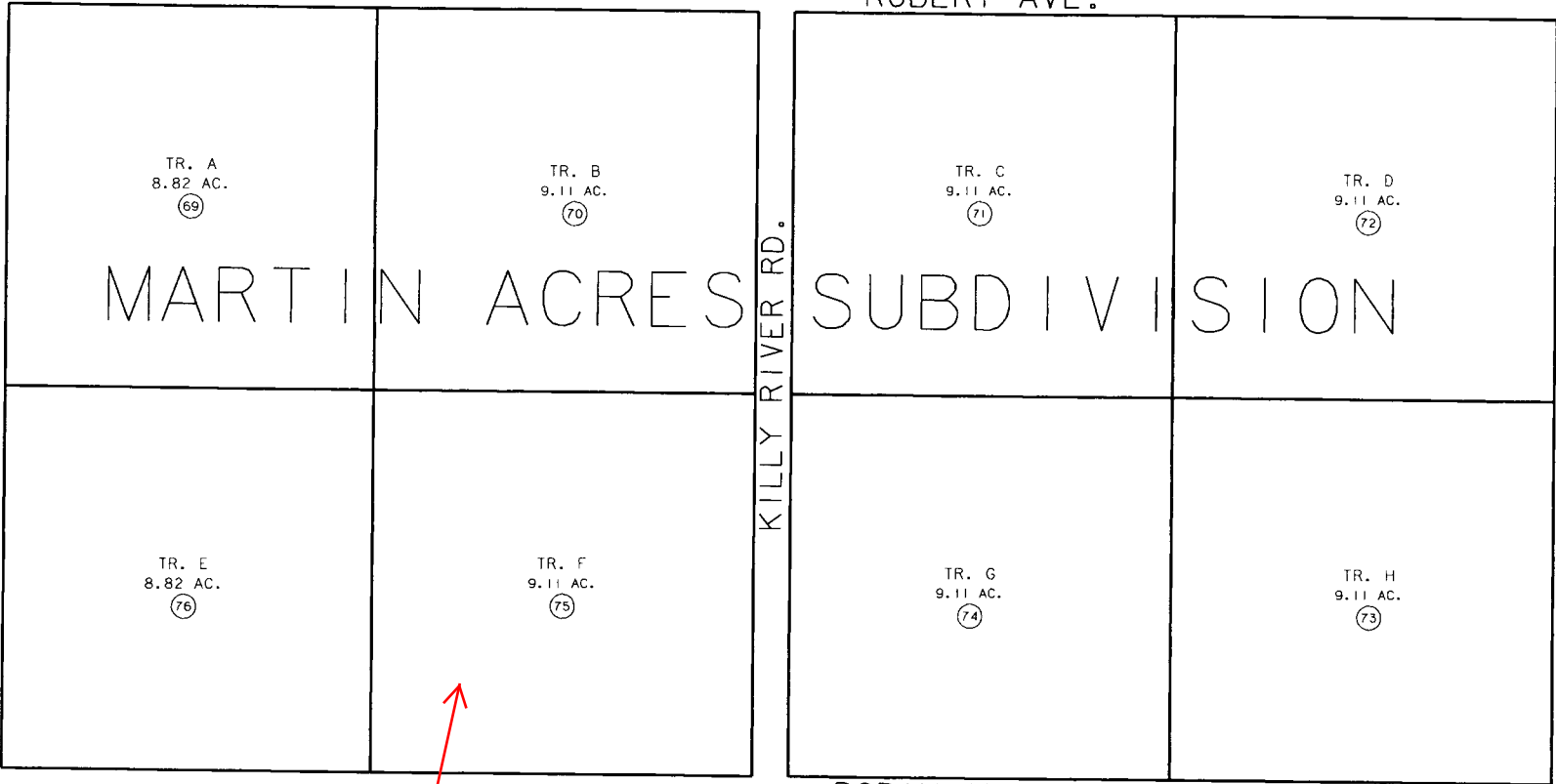


115

ROBERT AVE.



TR. A
8.82 AC.
69

TR. B
9.11 AC.
70

TR. C
9.11 AC.
71

TR. D
9.11 AC.
72

MARTIN ACRES SUBDIVISION

TR. E
8.82 AC.
76

TR. F
9.11 AC.
75

TR. G
9.11 AC.
74

TR. H
9.11 AC.
73

ROBIN AVE.

43

LAKE ST.

KILLY RIVER RD.

GLACIER BLUE AVE.

321

32

DATE: AUG. 24, 1993

FOR 19 <u>94</u> ASSESSMENT ROLL
DELETE ADD REVISED
TO
REVISED
PAGE



NOTE - Assessor's Block Numbers Shown In Ellipses
 Assessor's Parcel Numbers Shown In Circles

Assessor's Map
 Kenai Peninsula Borough

THIS MAP IS PREPARED
 FOR KENAI PENINSULA
 BOROUGH ASSESSING DEPT.
 USE ONLY AND IS NOT
 INTENDED FOR ANY
 OTHER USE OR REPRESENTATION