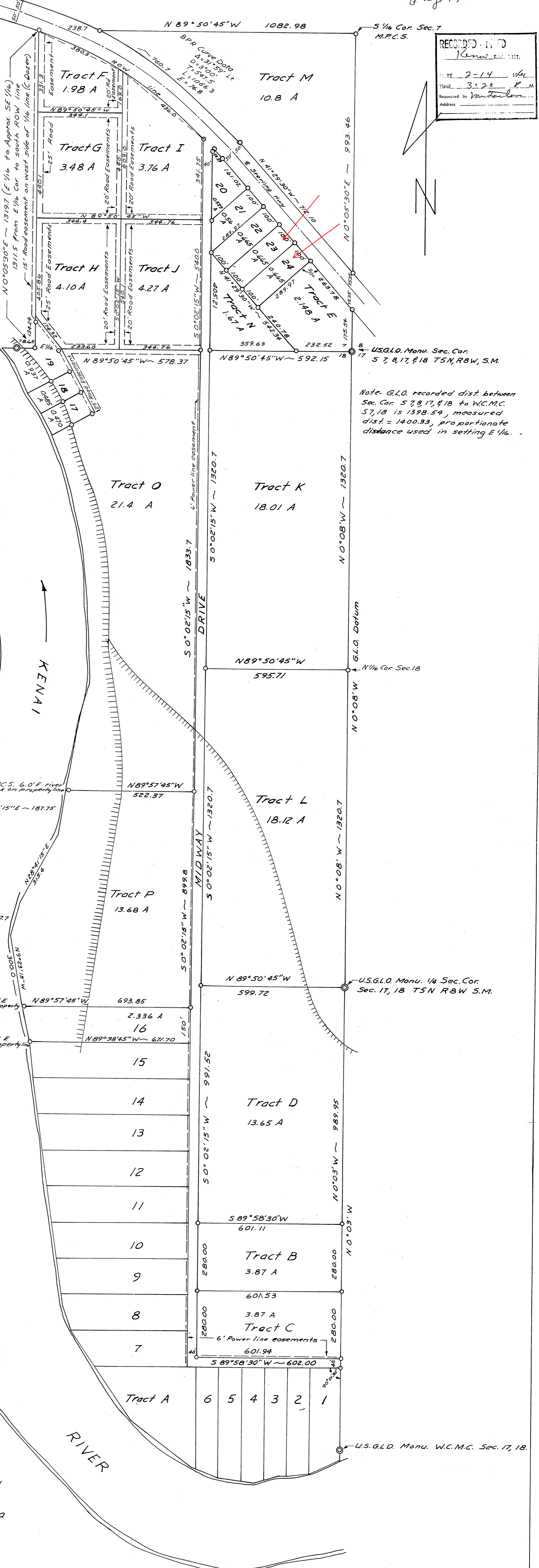
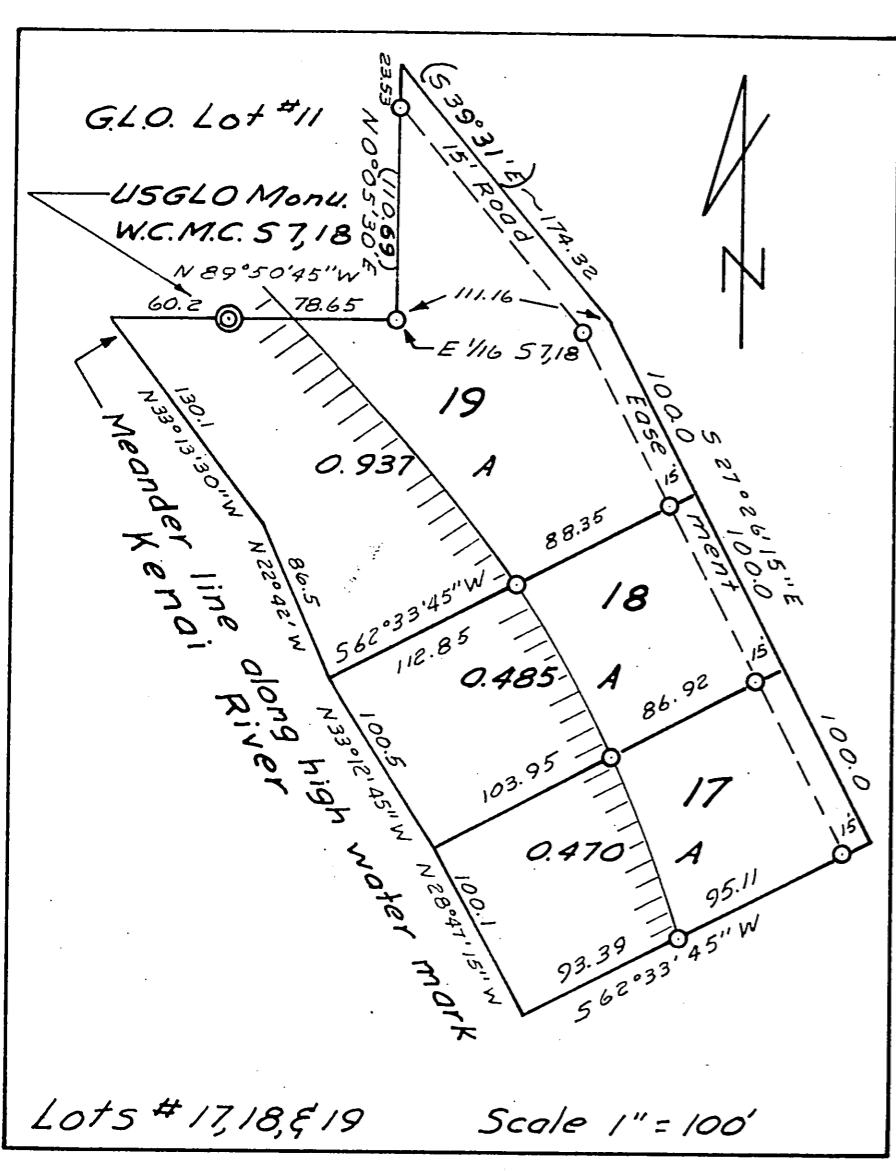
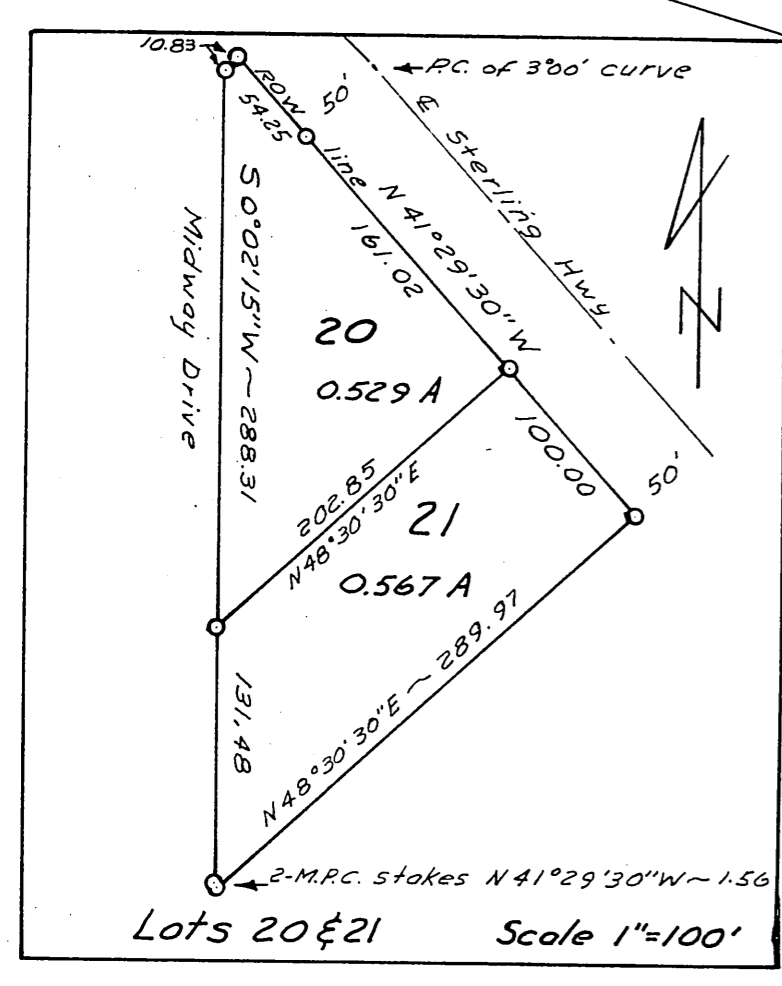
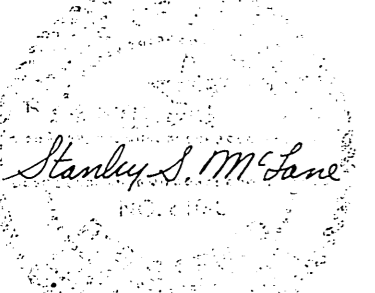


RECORDED - 1170
Kenes REC. DIST.
DATE 2-14 1964
TIME 3:20 P.M.
Requested by Stanley S. McLane
Address



Note: G.L.O. recorded dist between Sec. Cor. 5, 7, 8, 17, & 18 to W.C.M.C. 5, 7, 18 is 1398.54, measured dist = 1400.33, proportionate distance used in setting E 1/4.

PLAT CORRECTION
Data parenthesized on Lot 19, has been corrected to conform with the existing field survey.
STANLEY S. McLANE Date, 1-30-61



McFARLAND SUBDIVISION
Developed by John F. McFarland
Description - SE 1/4, SE 1/4, Sec. 7 and G.L.O. Lots 1, 7, 8, and 13 of Sec. 18 T5N, R8W, Seward Meridian, Alaska

- Legend-
1. Tract A and lots 1 thru 15 were surveyed by DL. Bear, 1953, and have been recorded on a revised and amended plat, April 30, 1958
 2. A 6 foot easement for power lines has been established as indicated on the west side of Midway Drive and across the south side of Tract C.
 3. On the tracts and lots contiguous to the Sterling Highway and Midway Drive property lines and easement lines are the same. On the remaining road easements property lines contain the easements.
 4. o Indicates 1/2" metal property corner stake with cap marked (property corner 610-5)
 5. © Indicates U.S.G.L.O. monument

Surveyed & Drawn by Stanley S. McLane Registered Surveyor #610-5 Date-Jan 15, 1960 Scale 1"=200'

McFARLAND Sub K-797