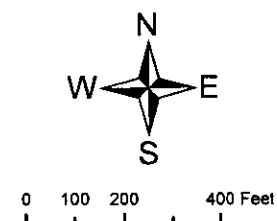
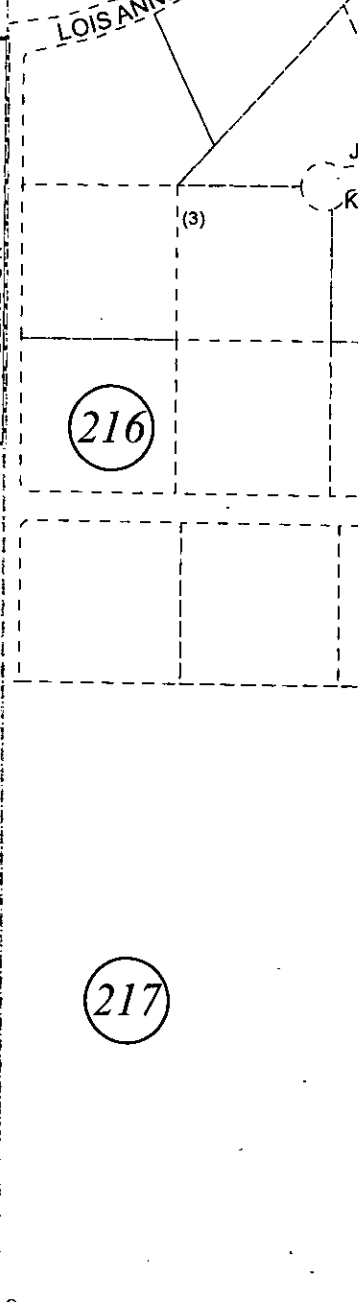
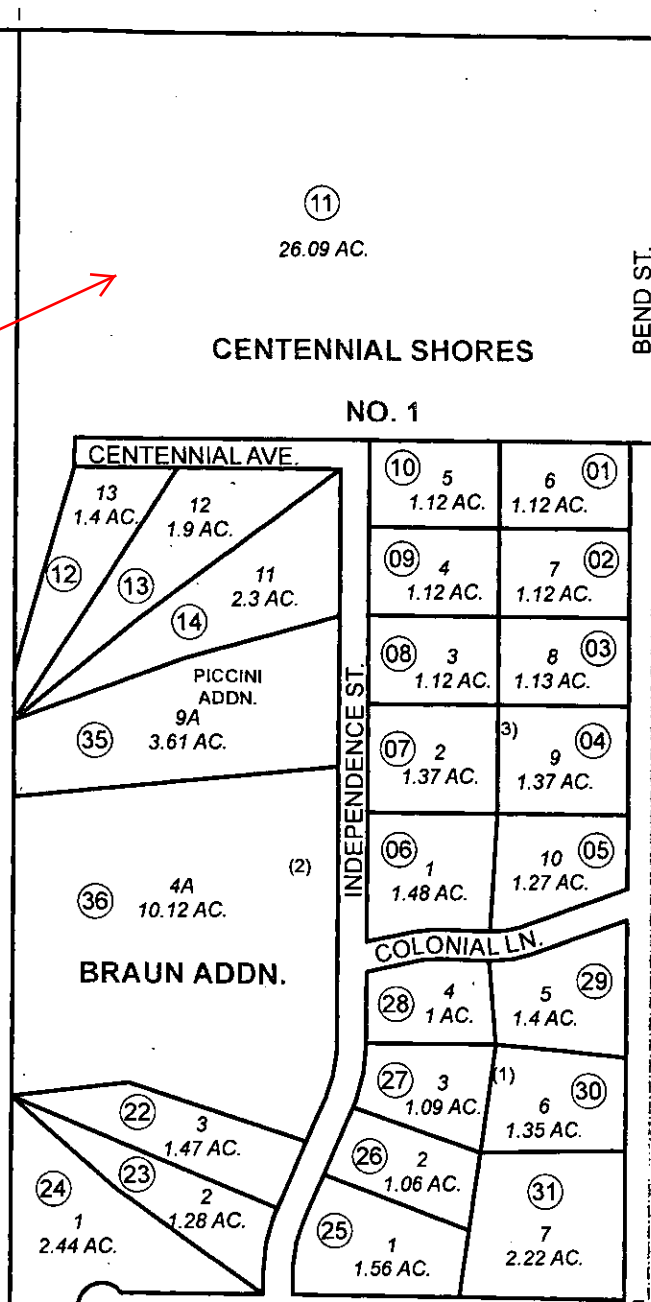
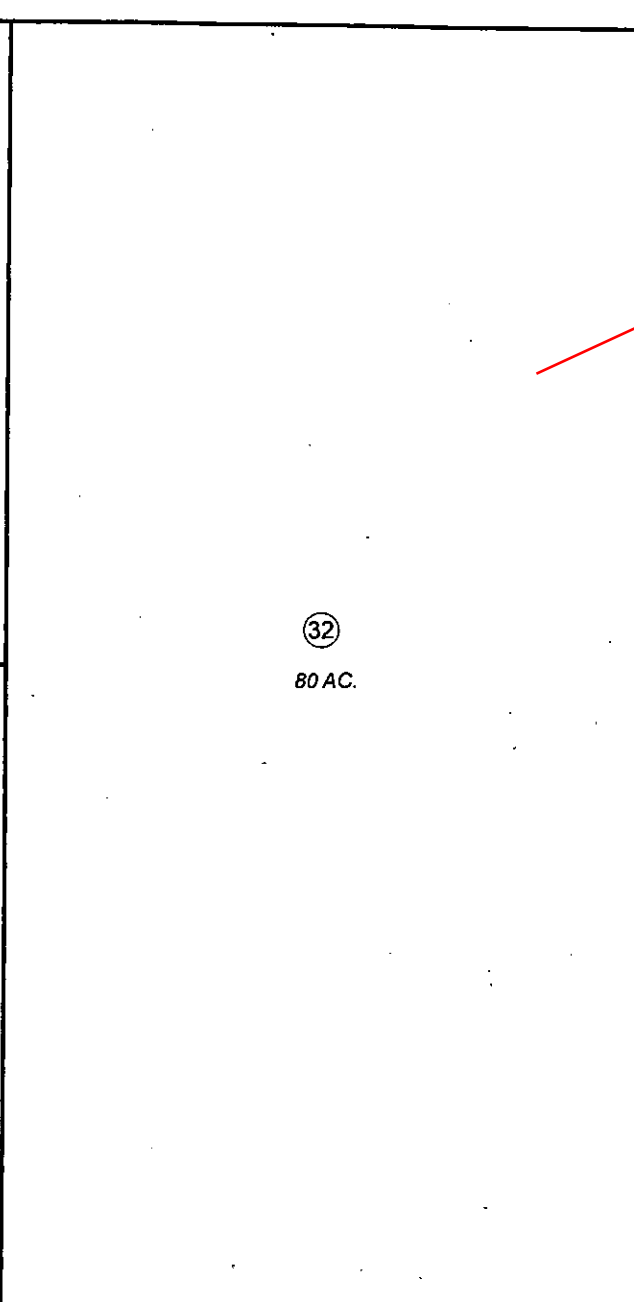
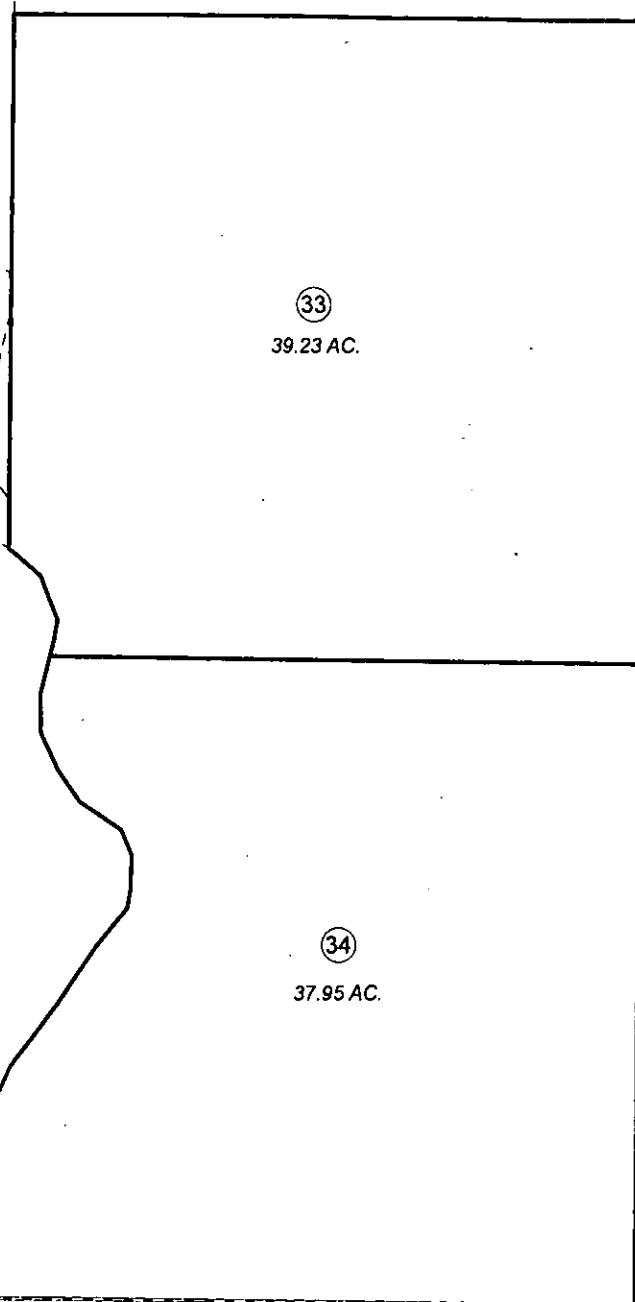
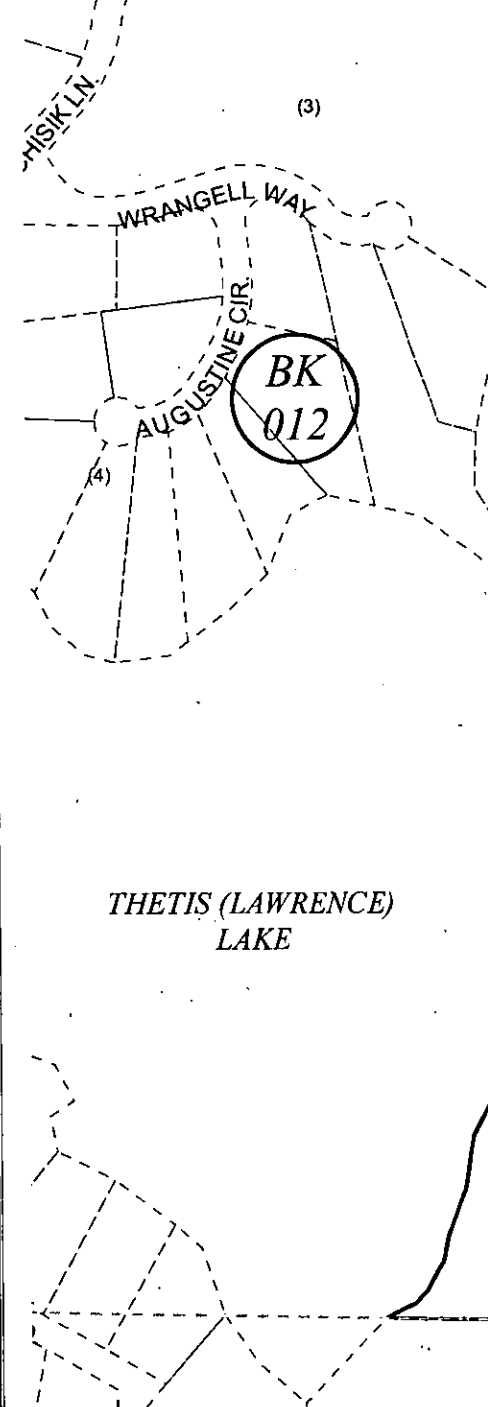


S 1/2, SEC. 07, T07N, R11W, S.M.

013-218

(211)



MAY 17, 2011

For 2012 assessment roll		
Delete	Add	Revise
	To	
17-21	36	

Assessor's Map  
Kenai Peninsula Borough

CENTENNIAL SHORES SUB NO. ONE KN0850157  
CENTENNIAL SHORES SUB PICCINI ADDN KN2010046  
CENTENNIAL SHORES SUB BRAUN ADDN KN2011017

This map is prepared for Kenai Peninsula Borough Assessing Dept. use only and is not intended for conveyance nor is it a survey.  
Note- Assessor's block Numbers Shown in Elipses  
Assessor's Parcel Numbers Shown in Circles