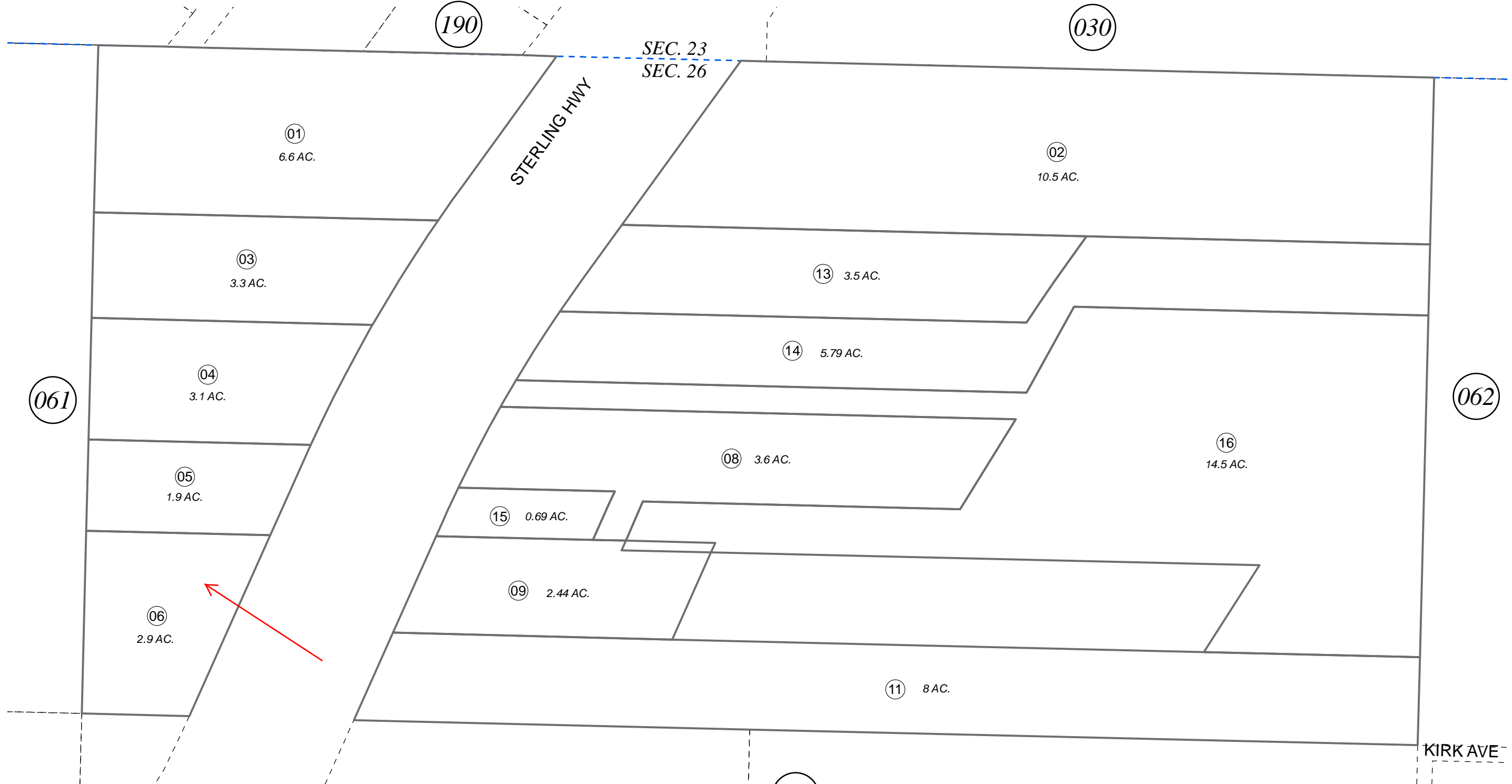


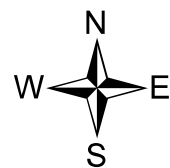
NE 1/4 NW 1/4, NW 1/4 NE 1/4, SEC. 26, T01S, R14W, S.M.

157-160



FEBRUARY 12, 2014

For 2014 assessment roll		
Delete	Add	Revise
	To	
		14
(ACREAGE CHANGE)		



0 50 100 200 Feet

Assessor's Map  
Kenai Peninsula Borough

RECORD OF SURVEY HM2013001

Note- Assessor's block Numbers Shown in Elipses  
Assessor's Parcel Numbers Shown in Circles

This map is prepared for Kenai Peninsula Borough Assessing Dept. use only and is not intended for conveyance nor is it a survey.