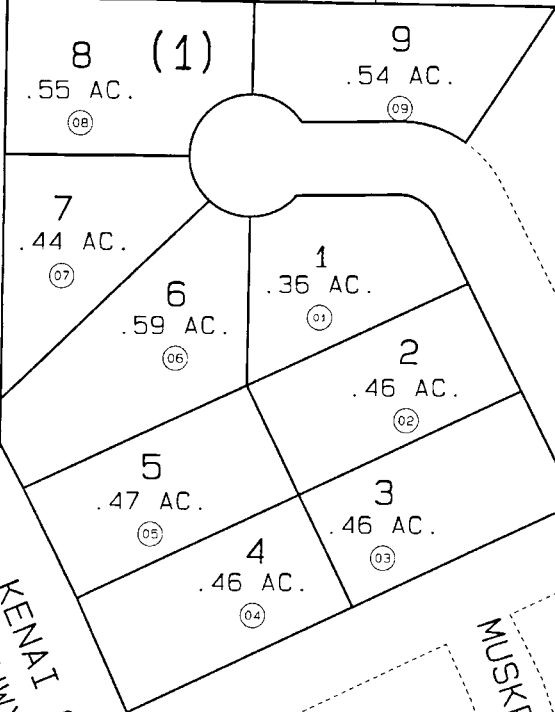


(47)

K ST. S.E.

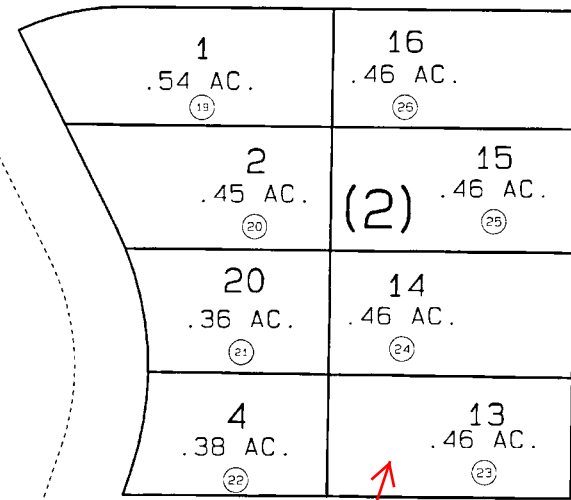
HIGHLANDS SUBDIVISION

SEC. 7  
SEC. 8



(171)

SILVER SLAMON DR.

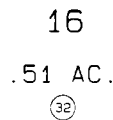


85th. AVE. SE

(50)

KENAI SPUR HWY.

MUSKRAT CT.



(3)

(171)

(18)

DATE: JULY 30, 1996

FOR 1997 ASSESSMENT ROLL

DELETE	ADD	REVISED

HIGHLANDS KN001542

10-18	TO	TO
27-31	049-171	

Assessor's Map  
Kenai Peninsula Borough

THIS MAP IS PREPARED FOR KENAI PENINSULA BOROUGH ASSESSING DEPT. USE ONLY AND IS NOT INTENDED FOR ANY OTHER USE OR REPRESENTATION

NOTE - Assessor's Block Numbers Shown in Ellipses  
Assessor's Parcel Numbers Shown in Circles

