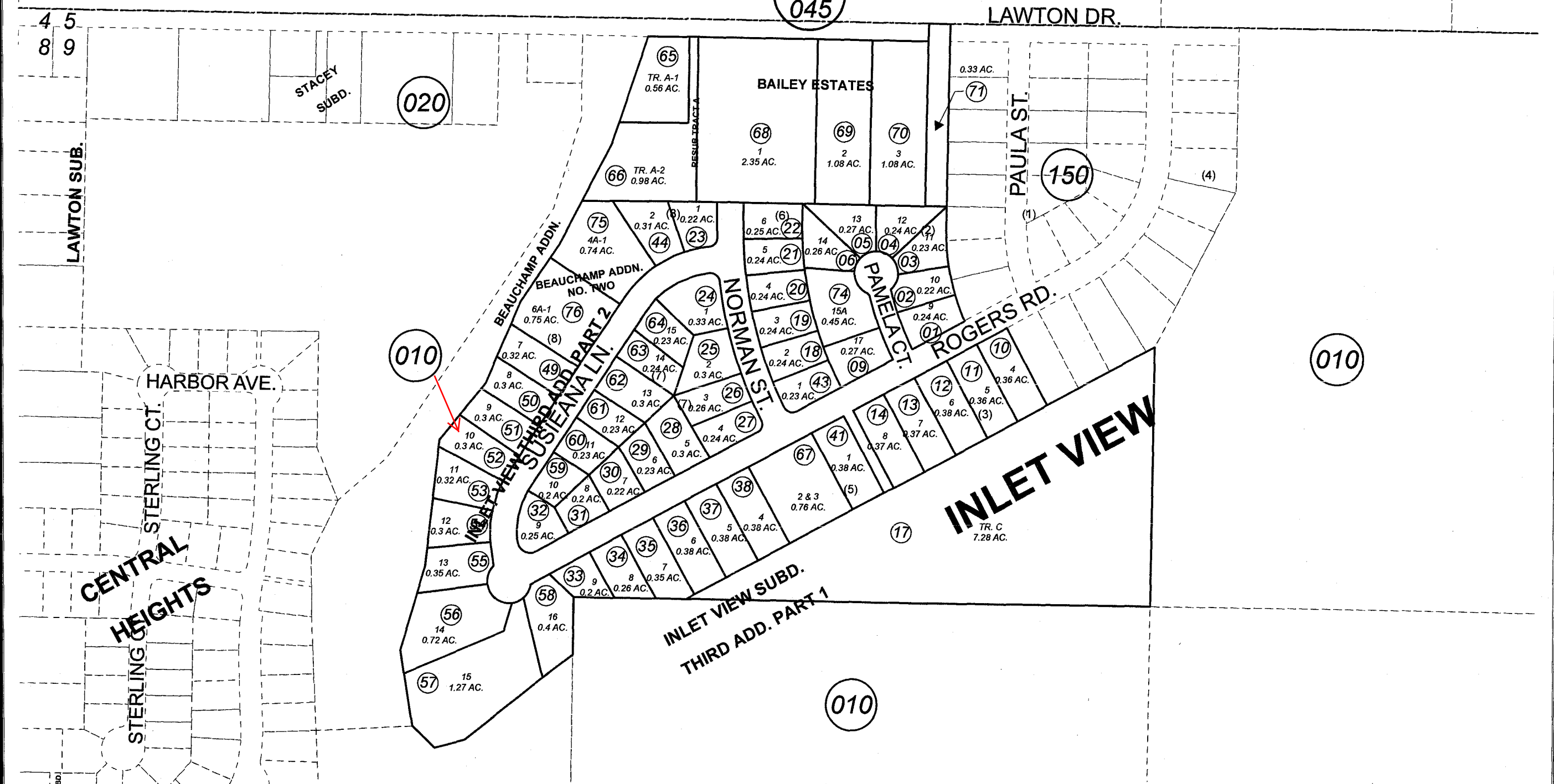
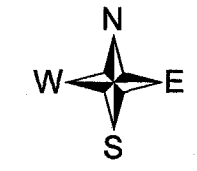


BK  
045



CENTRAL HEIGHTS  
STERLING CT.  
STERLING CT.



DECEMBER 29, 2006

For 2007 assessment roll

Delete	Add	Revise
To		
45,72,73	75,76	

Assessor's Map  
Kenai Peninsula Borough

- INLET VIEW SUB 1ST REVISION □ KN0001515
- INLET VIEW SUB SECOND ADDN □ KN0850069
- INLET VIEW SUB THIRD ADDN PART ONE □ KN0850228
- INLET VIEW SUB THIRD ADDN PART TWO □ KN0860190
- INLET VIEW SUB RESUB OF TRACT A □ KN0950060
- BAILEY ESTATES AMENDED □ KN0970033
- INLET VIEW SUB BEAUCHAMP ADDN □ KN2003099
- INLET VIEW SUB TAPLEY ADDN □ KN2004036
- INLET VIEW SUB BEAUCHAMP ADDN NO. TWO KN2006127

This map is prepared for Kenai Peninsula Borough Assessing Dept. use only and is not intended for conveyance nor is it a survey.

Note- Assessor's block Numbers Shown in Ellipses  
Assessor's Parcel Numbers Shown in Circles