

S1/2SE1/4 SEC. 28, T05N, R10W, S.M.

059-015

014

UBD.

O'NEILL'S SCENIC VIEW

DENA'INA MEADOWS PART 1

PART 2

YUPIK RD.

ATHABASKAN DR.

E. REDOUBT AVE.

N. LARK ST.

220

320

BK 060

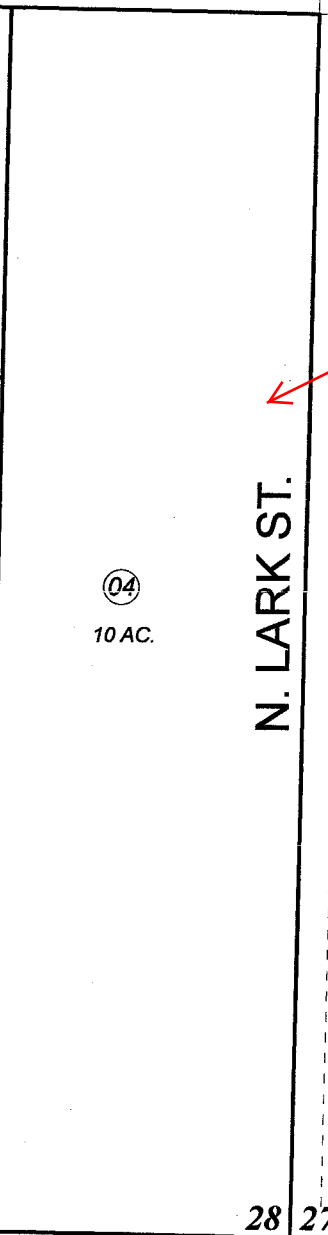
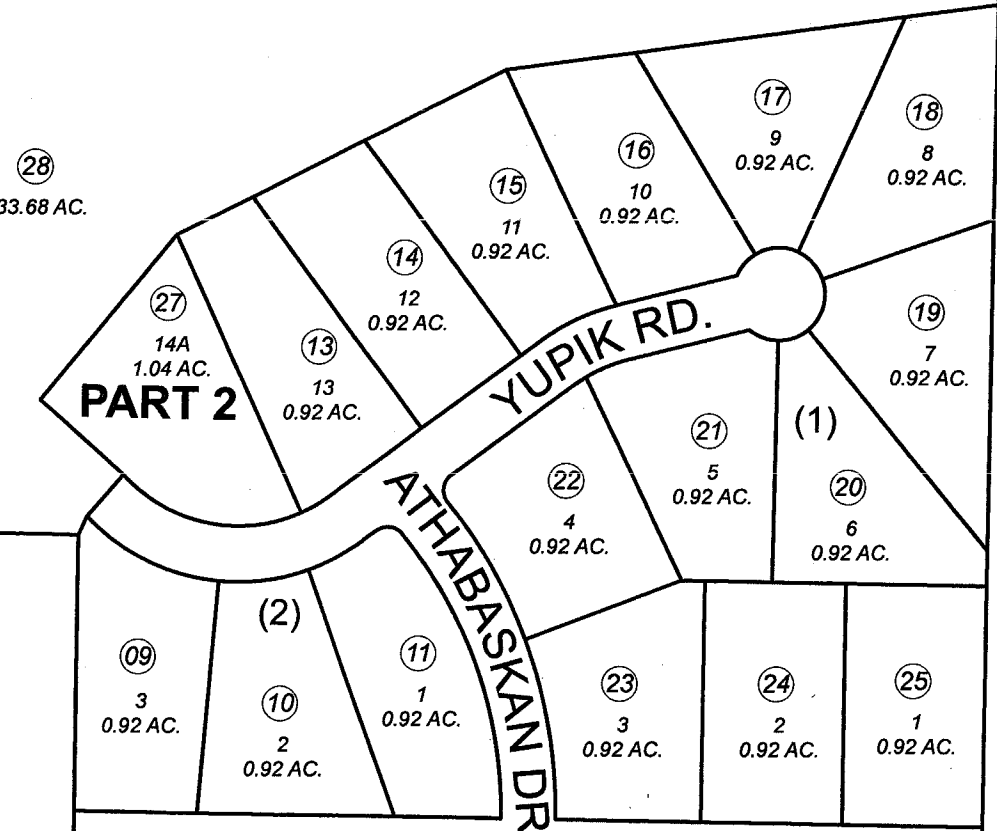
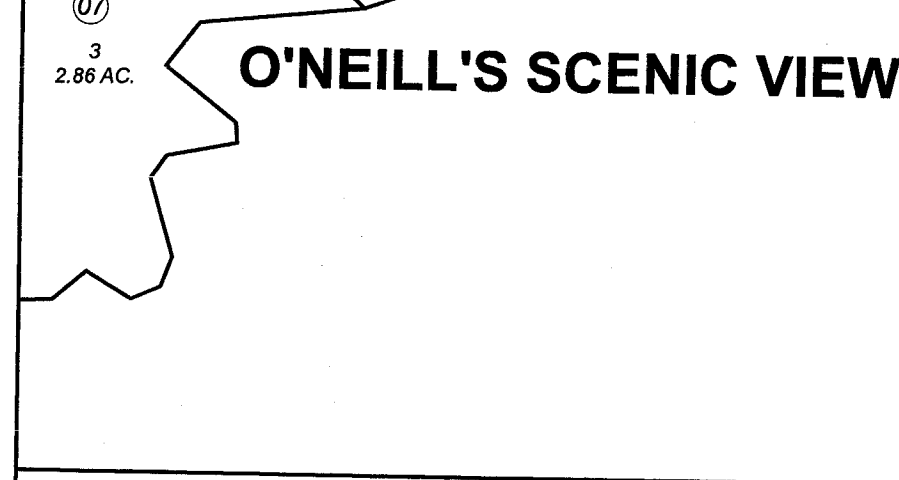
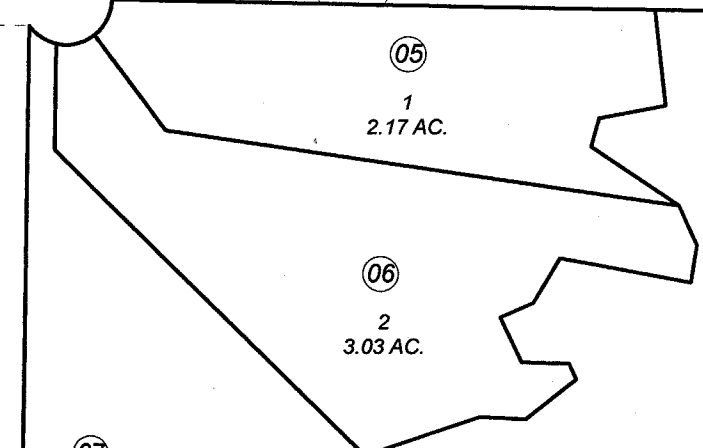


DECEMBER 28, 2006		
For 2007 assessment roll		
Delete	Add	Revise
	To	
12,26	27,28	

Assessor's Map
Kenai Peninsula Borough

ONIELLS SCENIC VIEW SUB KN2005032
DENA'INA MEADOWS PT 1 KN2006016
DENA'INA MEADOWS PT 2 KN2006129

This map is prepared for Kenai Peninsula Borough Assessing Dept. use only and is not intended for conveyance nor is it a survey.
Note- Assessor's block Numbers Shown in Ellipses
Assessor's Parcel Numbers Shown in Circles



28 27
33 34
ST