

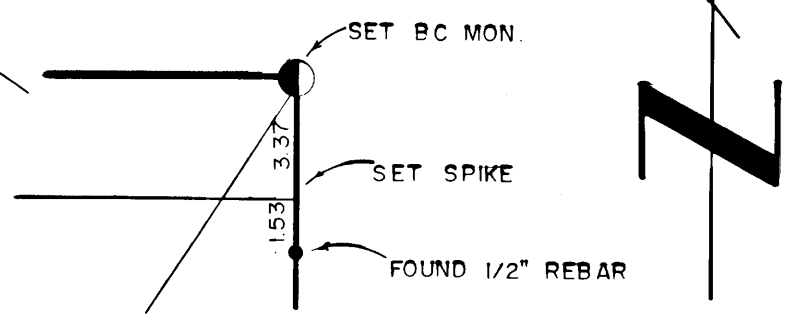
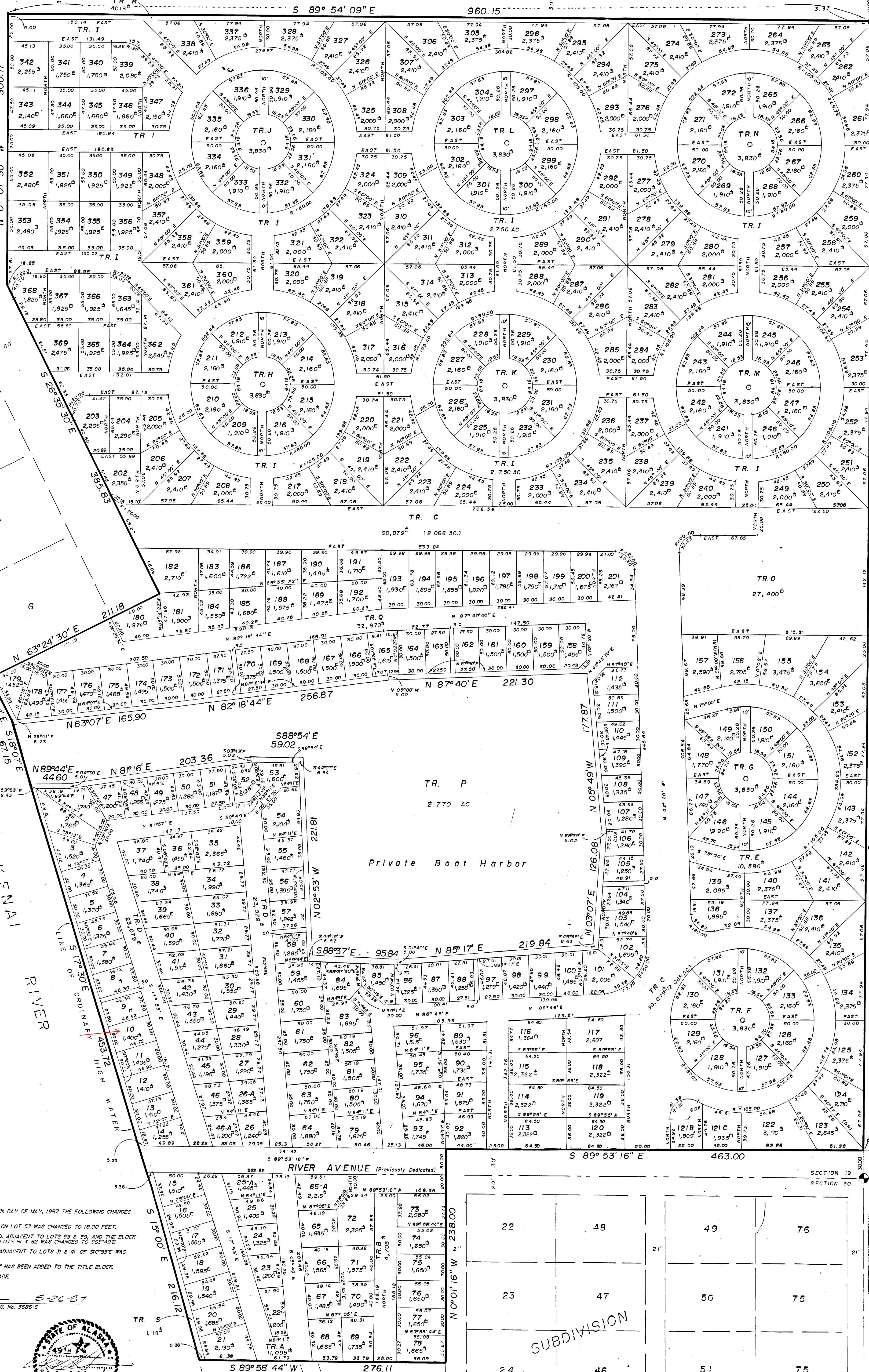
KENAI RIVER ACRES

BIG EDDY ROAD

SILVER AVE

WILSON SUBDIVISION

RAINBOW SUBDIVISION



- NOTES:
1. THE LOCATION OF THE ALASKA PIPELINE ESMT WAS TAKEN FROM THE PLAT OF RAINBOW SUBDIVISION, PLAT NO. 943, K.R.D.
 2. THE TAXES ON THE LETTERED TRACTS, (A-S), SHALL BE EQUALLY APPORTIONED AMONG THE NUMBERED TRACTS.
 3. RESTRICTIVE COVENANTS ARE RECORDED IN BOOK 202, PAGE 974, K.R.D.
 4. THE LETTERED TRACTS ARE SUBJECT TO AN UNDERGROUND UTILITY EASEMENT.

- LEGEND:
- SET BC MONUMENT
 - SET 1/2" IRON PIPE
 - ⊥ SET 1/2" IRON SPIKE
 - FOUND 1/2" REBAR
 - FOUND 1/2" REBAR WITH PLASTIC CAP, 610'S

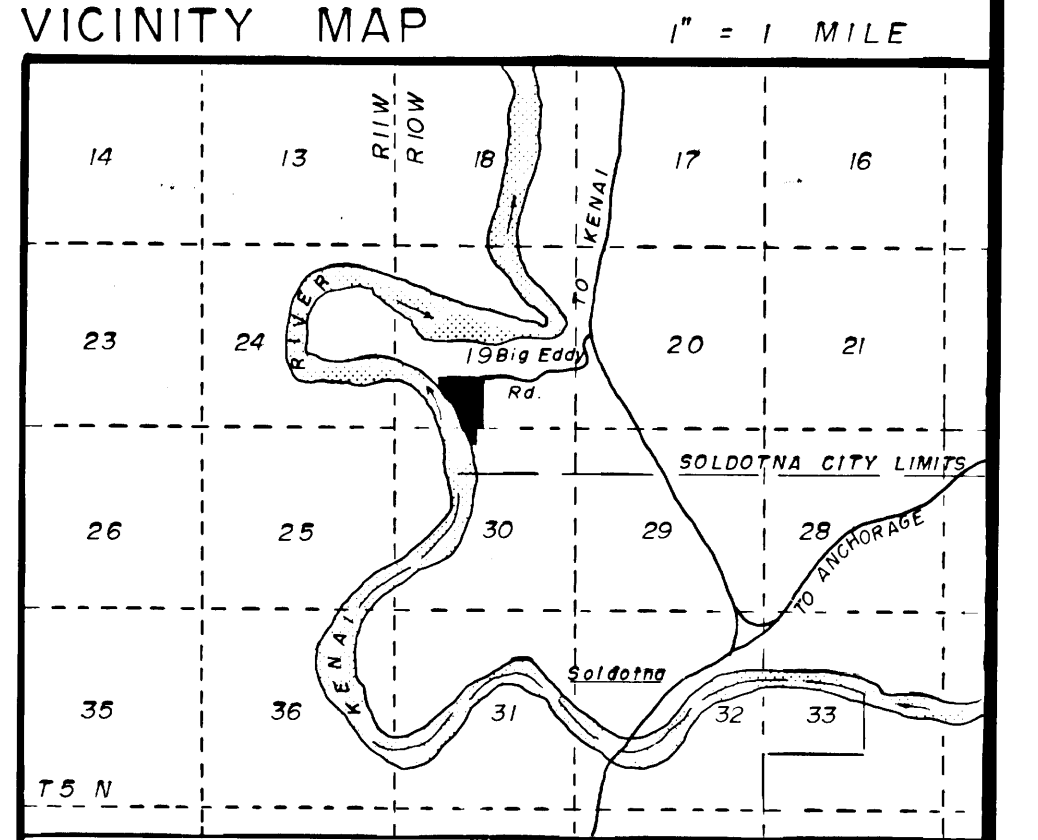
CERTIFICATE OF OWNERSHIP
 I HEREBY CERTIFY THAT I AM THE OWNER OF THE PROPERTY SHOWN AND DESCRIBED HEREON. I HEREBY REQUEST APPROVAL OF THIS PLAT SHOWING SUCH EASEMENTS FOR PUBLIC ROADS, WAYS AND EASEMENTS DEDICATED BY ME FOR PUBLIC USE.

POACHER'S COVE ASSOC
 BY: David H. Keating 803 1026 SOLDOTNA, AK. 99669
 NOTARY'S ACKNOWLEDGEMENT
 SUBSCRIBED AND SWORN TO BEFORE ME THIS 9th DAY OF November, 1982.
Halter C. Marchant 6627 183rd
 NOTARY PUBLIC FOR ALASKA MY COMMISSION EXPIRES: _____

BY: Audie L. Moore PO BOX 4-1521 ANCHORAGE, AK. 99509
 NOTARY'S ACKNOWLEDGEMENT
 SUBSCRIBED AND SWORN TO BEFORE ME THIS 9th DAY OF November, 1982.
Halter C. Marchant 6627 183rd
 NOTARY PUBLIC FOR ALASKA MY COMMISSION EXPIRES: _____

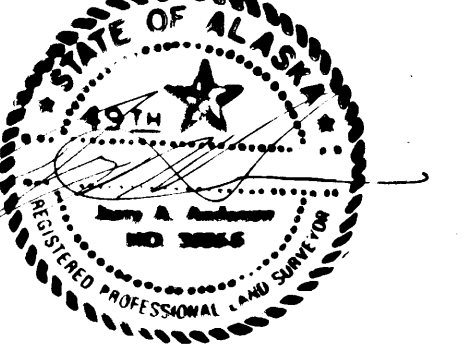
SURVEYOR'S CERTIFICATE
 I, THE UNDERSIGNED REGISTERED SURVEYOR HEREBY CERTIFY THAT A LAND SURVEY HAS BEEN COMPLETED UNDER MY DIRECT SUPERVISION AND THAT CORNERS AND MONUMENTS HAVE BEEN LOCATED AND ESTABLISHED AND THAT DIMENSIONS SHOWN HEREON ARE TRUE AND CORRECT.
Jerry Anderson 11/28/82
 JERRY ANDERSON, 3686-S DATE

PLAT APPROVAL
 THIS PLAT WAS APPROVED BY THE KENAI PENINSULA BOROUGH PLANNING COMMISSION AT THE MEETING OF MARCH 8, 1982.
 KENAI PENINSULA BOROUGH
 BY: [Signature]
 AUTHORIZED OFFICIAL



AFFIDAVIT
 I CERTIFY THAT ON THIS 26th DAY OF MAY, 1987 THE FOLLOWING CHANGES WERE MADE TO THIS PLAT:
 1) THE FRONTAGE DISTANCE ON LOT 53 WAS CHANGED TO 18.00 FEET.
 2) THE BEARING ON TRACT D, ADJACENT TO LOTS 58 & 59, AND THE BLOCK LINE BEARING ADJACENT TO LOTS 31 & 32 WAS CHANGED TO S 89° 53' 16" E.
 3) THE BLOCKLINE BEARINGS ADJACENT TO LOTS 31 & 41 OF S1055E WAS ADDED.
 4) THE NOTATION 'AMENDED' HAS BEEN ADDED TO THE TITLE BLOCK. NO OTHER CHANGES WERE MADE.

Jerry Anderson 5-26-87
 JERRY A. ANDERSON PLS. REG. NO. 3686-S



87-69
 Kenai
 DATE: 4/28 1982
 TIME: 2:36 P.M.
 DRAWN BY: Ability

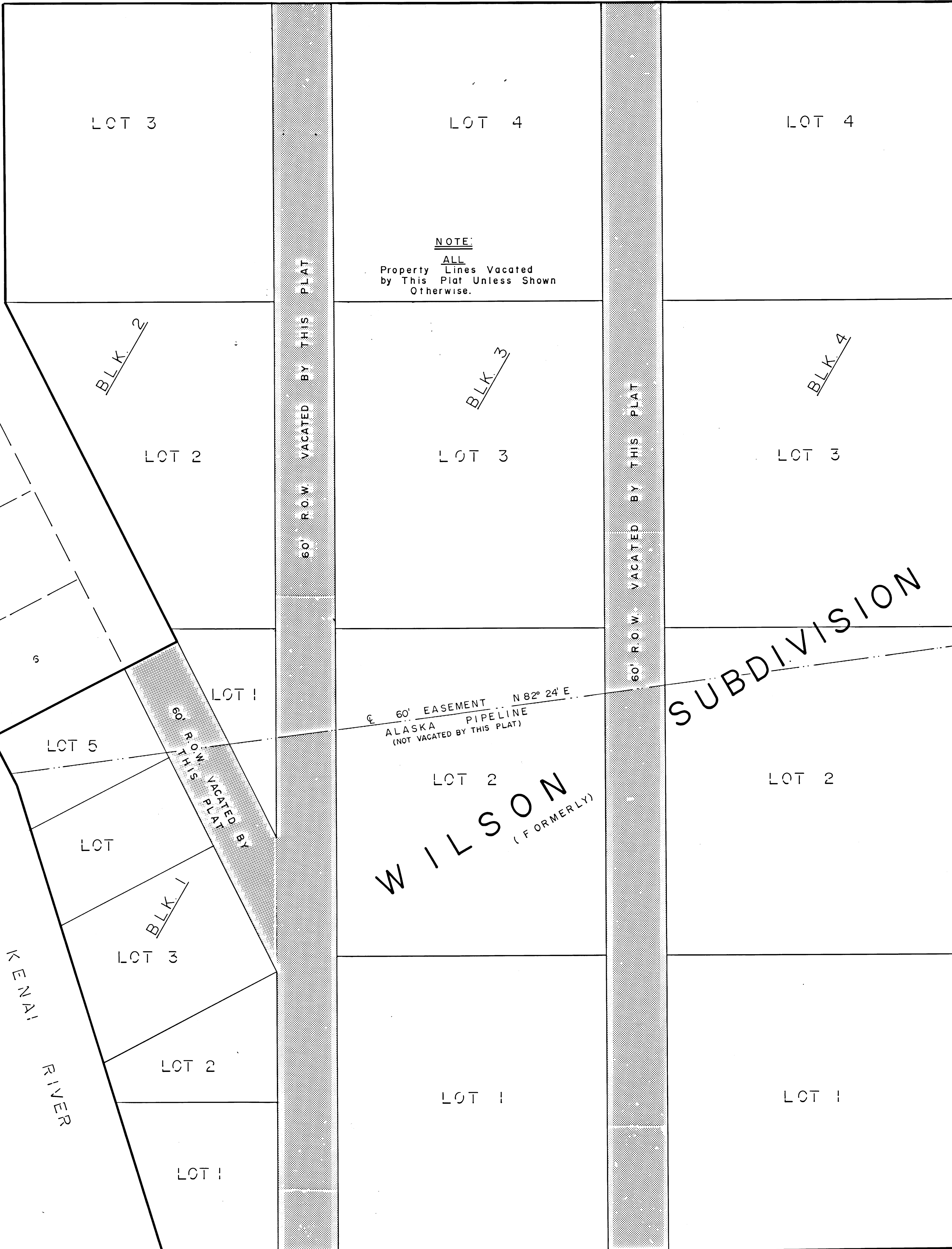
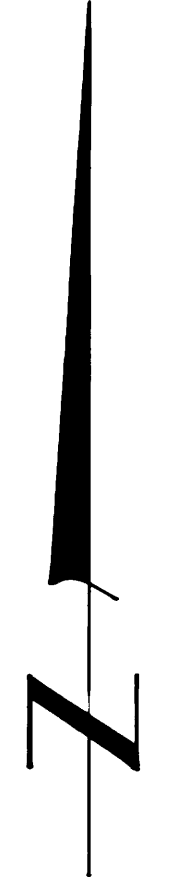
83-17
 Kenai
 2-10
 3-52
 KPB

DATE: APRIL, 1982
 SCALE: 1" = 50'
 DRAWN BY: S WILSON
 JOB No.: 1398
 FLD. BK. No.: 113,123

POACHER'S COVE
 PLANNED UNIT DEVELOPMENT
 Being a replat of Wilson Subd., K-1374, except lots 6-10, 11, 18 & replat of lots 1A, 2, 9, 18-21, Hodgson Subd., K-1382 Situated in the SW 1/4, Sec 19, T 5 N, R 10 W, S 4 M containing 27,738 ACRES.

ABILITY SURVEYS
 JERRY ANDERSON BOX 1263 HOMER, ALASKA

KENAI RIVER ACRES



NOTE:
ALL
Property Lines Vacated
by This Plat Unless Shown
Otherwise.

60' EASEMENT N 82° 24' E
ALASKA PIPELINE
(NOT VACATED BY THIS PLAT)

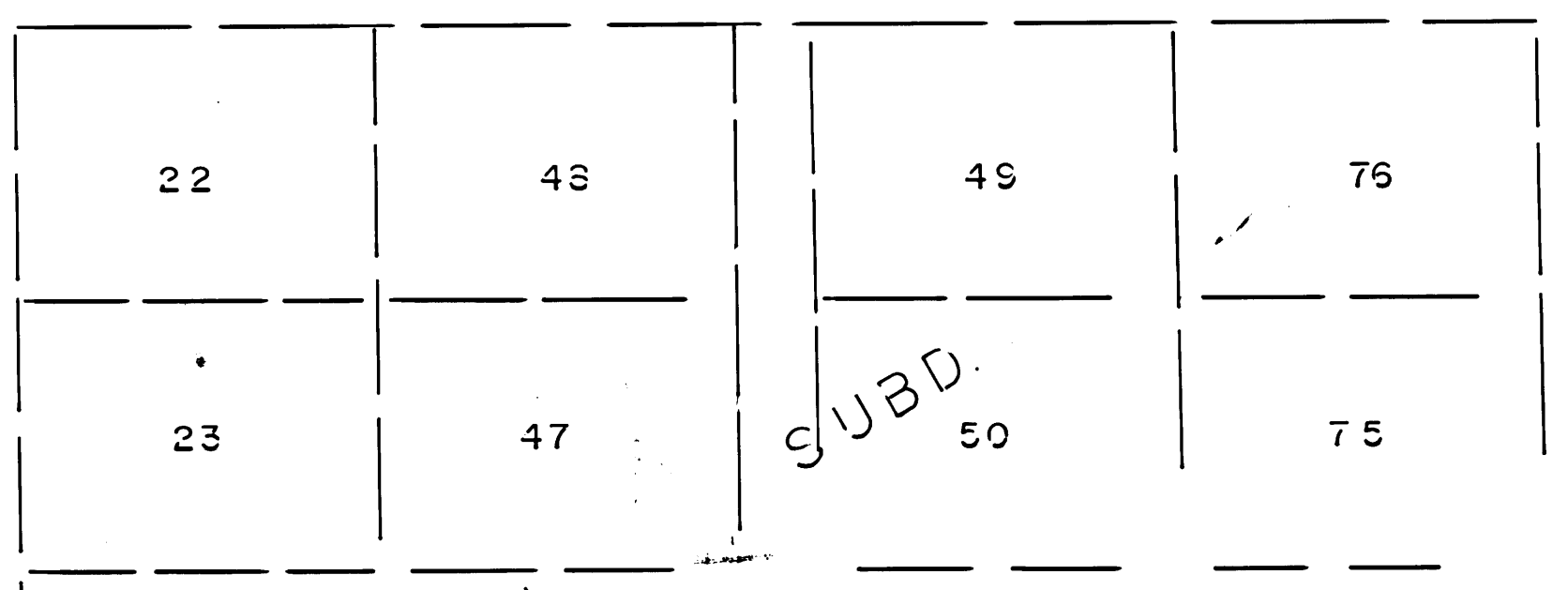
60' R.O.W. VACATED BY THIS PLAT

60' R.O.W. VACATED BY THIS PLAT

8' R.O.W. VACATED BY THIS PLAT

DAN AVENUE
THESE LINES NOT VACATED BY THIS PLAT

HODGSON
SUBDIVISION
(FORMERLY)



HODGSON

- 16
- 15
- 14
- 13
- 12
- 11
- 10
- 9
- 8
- 7
- 6
- 5
- 4
- 3
- 2
- 1

SUBDIVISION
RAINBOW

87-69
RECORDED FILED 25
Kenai REC. DIST.
DATE 5/23/87 10:07
TIME 2:06 P
RECORDED BY Ability

83-17
RECORDED FILED 1200
Kenai REC. DIST.
DATE 2-10-83
TIME 3:52 P
RECORDED BY APB

POACHER'S COVE
PLANNED UNIT DEVELOPMENT
RIGHT OF WAY VACATION PLAT