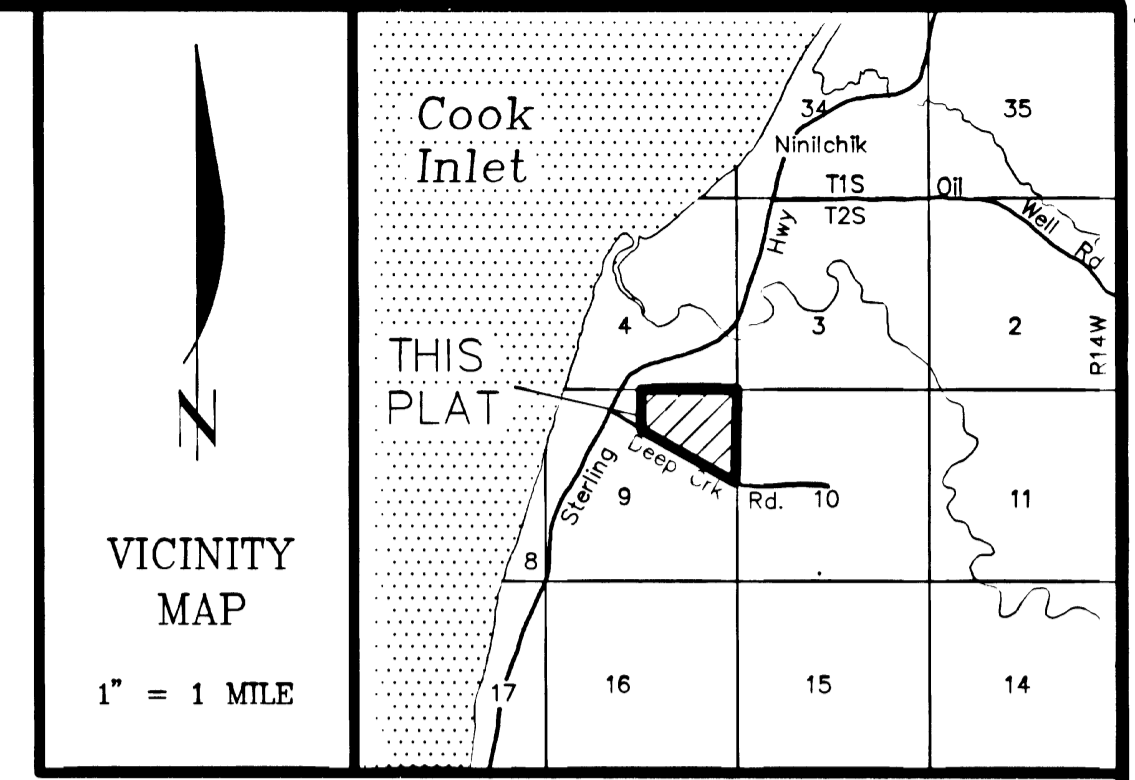
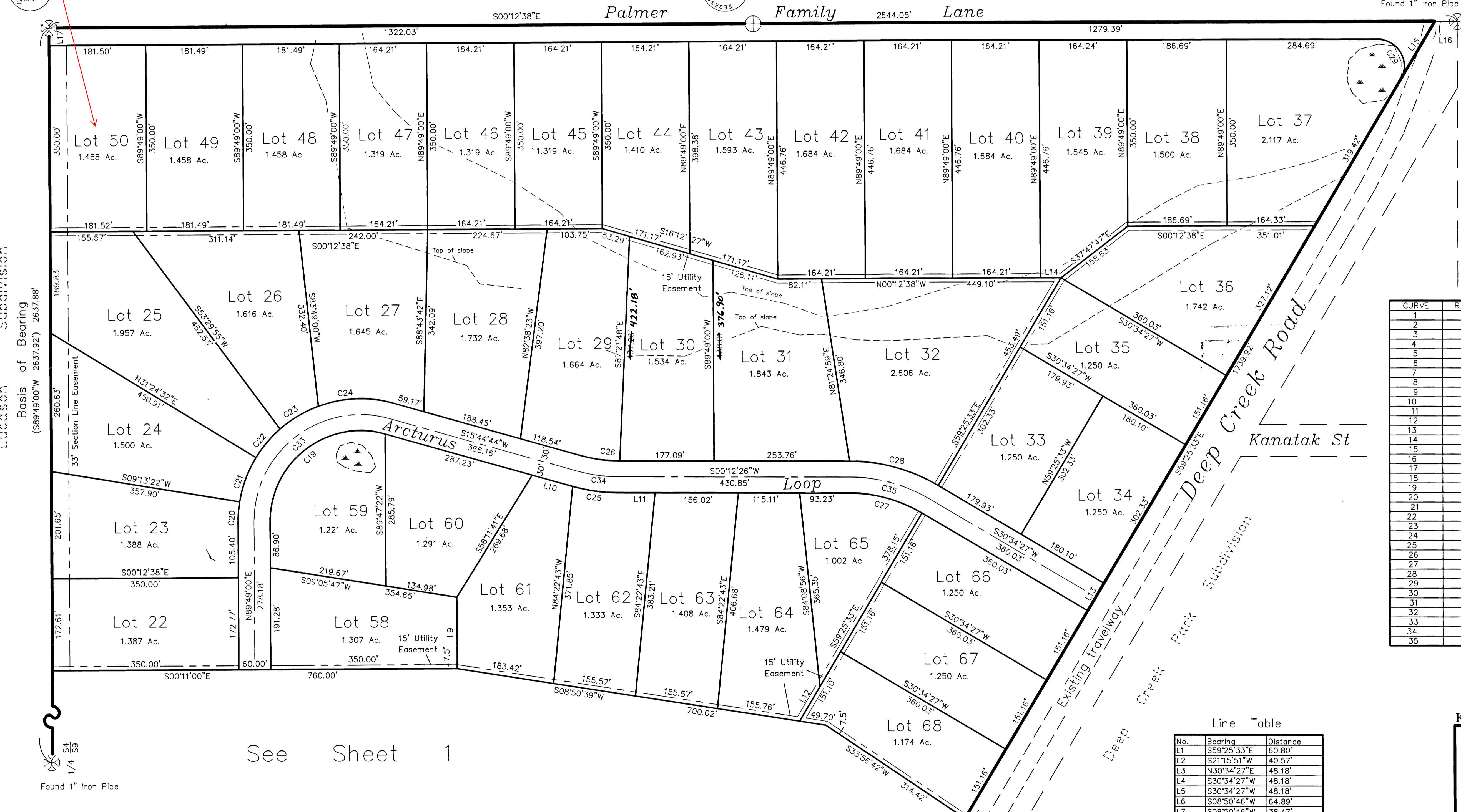


**LEGEND:**

- BLM MONUMENT (found this survey)
- MONUMENT (found this survey)
- 5/8" REBAR (set this survey)
- RECORD DATUM
- Area subject to seasonal inundation

Found 2 1/2" Brass Cap on 2" Iron Pipe

Set 2 1/2" Alum. cap Monument 30" Long



Found 1" Iron Pipe

**Curve Table**

CURVE	RADIUS	LENGTH	TANGENT	CHORD	BEARING	DELTA
1	470.00'	137.36'	69.18'	136.88'	S12°53'29"W	16°44'44"
2	470.00'	219.56'	111.82'	217.57'	S08°51'52"E	26°45'56"
3	50.00'	35.59'	18.59'	34.85'	S42°38'25"E	40°47'13"
4	50.00'	43.41'	23.18'	42.06'	S38°09'40"E	49°44'46"
5	50.00'	89.98'	62.98'	78.32'	S38°15'51"W	103°06'17"
6	50.00'	87.80'	60.24'	76.95'	N39°52'40"W	100°36'39"
7	50.00'	29.49'	15.19'	29.07'	S06°28'11"E	33°47'41"
8	530.00'	128.93'	64.78'	128.61'	S16°23'54"E	13°56'16"
9	530.00'	60.00'	30.03'	59.97'	S06°11'11"E	06°29'11"
10	530.00'	107.45'	53.91'	107.26'	S02°51'53"W	11°36'58"
11	530.00'	108.09'	54.23'	107.81'	S14°30'54"W	11°41'07"
12	530.00'	8.38'	4.19'	8.38'	S20°48'39"W	00°54'23"
13	270.00'	102.39'	51.62'	101.78'	S19°42'36"W	21°43'41"
14	330.00'	125.15'	63.33'	124.40'	S19°42'36"W	21°43'41"
15	170.00'	266.99'	169.95'	240.38'	S44°49'30"W	89°59'01"
16	230.00'	89.01'	45.07'	88.48'	S10°55'13"W	22°10'27"
17	230.00'	101.95'	51.83'	101.12'	S34°42'22"W	25°23'51"
18	230.00'	170.25'	89.24'	166.39'	S68°36'39"W	42°24'43"
19	170.00'	314.30'	225.31'	271.41'	S37°13'08"E	105°55'44"
20	230.00'	37.76'	18.92'	37.72'	S85°28'49"E	09°24'22"
21	230.00'	89.06'	45.10'	88.51'	S69°41'03"E	22°11'10"
22	230.00'	70.41'	35.48'	70.14'	S49°49'14"E	17°32'28"
23	230.00'	83.89'	42.42'	83.43'	S30°36'02"E	20°53'57"
24	230.00'	144.10'	74.50'	141.75'	S02°12'10"E	35°53'47"
25	330.00'	89.49'	45.02'	89.22'	S07°58'35"W	15°32'18"
26	270.00'	73.22'	36.84'	73.00'	S07°58'35"W	15°32'18"
27	270.00'	143.10'	73.27'	141.43'	S15°23'27"W	30°22'01"
28	330.00'	174.90'	89.56'	172.86'	S15°23'27"W	30°22'01"
29	50.00'	105.40'	87.99'	86.94'	S80°10'54"W	120°47'05"
30	500.00'	445.22'	238.59'	430.66'	S04°14'42"E	51°01'06"
31	300.00'	113.77'	57.88'	113.09'	N19°42'36"E	21°43'41"
32	200.00'	314.10'	199.94'	282.80'	N44°49'30"E	89°59'01"
33	200.00'	369.76'	265.07'	319.30'	S37°13'08"E	105°55'44"
34	300.00'	81.36'	40.93'	81.11'	S07°58'35"W	15°32'18"
35	300.00'	159.00'	81.42'	157.15'	S15°23'27"W	30°22'01"

**Line Table**

No.	Bearing	Distance
L1	S59°25'33"E	60.80'
L2	S21°15'51"W	40.57'
L3	N30°34'27"E	48.18'
L4	S30°34'27"W	48.18'
L5	S30°34'27"W	48.18'
L6	S08°50'46"W	64.89'
L7	S08°50'46"W	38.47'
L8	S08°49'11"W	49.88'
L9	N89°49'00"E	134.09'
L10	S15°44'44"W	78.92'
L11	S00°12'26"W	66.48'
L12	S59°25'33"E	75.28'
L13	S59°25'33"E	60.00'
L14	S00°12'38"E	38.57'
L15	S59°25'33"E	126.40'
L16	S00°12'38"E	42.64'
L17	S89°49'00"W	30.00'

RECORDED  
 REC. DIST.  
 DATE: 19  
 TIME: M  
 REQUESTED BY:  
 SEGESSER SURVEYS  
 30485 ROSLAND ST.  
 SOLDOTNA, AK 99669

See Sheet 1

KPB FILE No. 98-214

**Northern Solitude Subdivision**

Located within the NE1/4 Section 9, T2S, R14W, SM, Homer Recording District, Kenai Peninsula Borough, Alaska.

Containing 109.998 Ac.

**SEGESSER SURVEYS**  
 30485 Rosland St.  
 Soldotna, AK 99669

JOB NO.	98041	DRAWN:	8-23-99
SURVEYED:	July 1998	SCALE:	1" = 100'
FIELD BK:	98-3	SHEET:	2 of 2

Home 99-51-2 to 9145